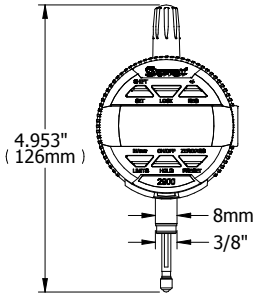
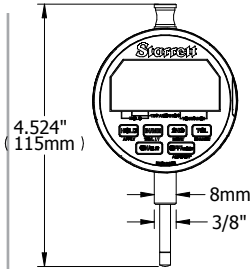


## AccuPLUG - BORE GAGING TECHNICAL SPECIFICATIONS

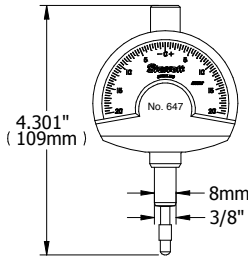
INDICATOR UNITS 8mm & 3/8"



2900-4 & 2900-4M

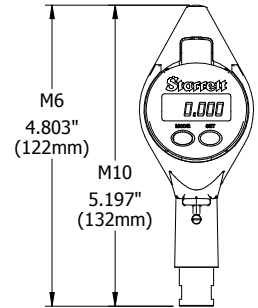


F2720AD & F2720ADM



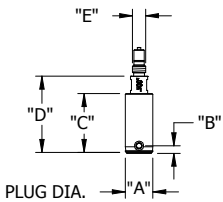
647 & 647M

MINI INDICATOR UNITS

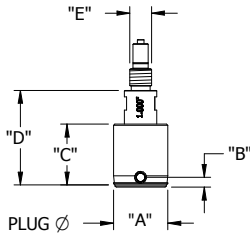


Mini Indicator with Shroud,  
Short Handle, M6 & M10

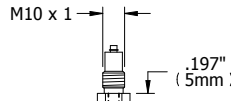
### AccuPLUGS



M6 AccuPlug

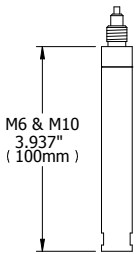


M10 AccuPlug

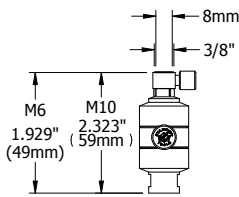


M6 to M10 Adapter

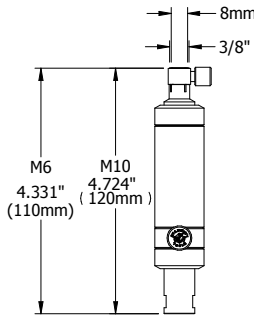
### ACCESSORIES



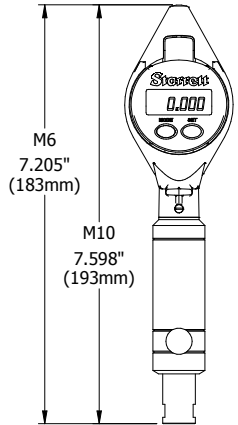
100mm Extension  
M6 & M10



Short Holder M6 & M10  
with 8mm or 3/8" Stem



Long Holder M6 & M10  
with 8mm or 3/8" Stem



Mini Indicator with Shroud,  
Short Handle, M6 & M10

### AccuPLUG DIMENSION SPECIFICATIONS

PLUG DIAMETER "A"	RANGE	"B"	"C"	"D"	"E"
0.2362" - 0.7874" (6 - 20mm)	.006" (0.15mm)	.138" (3.5mm)	1.063" (27mm)	1.378" (35mm)	M6 x 0.75
0.5906" - 1.7717" (15 - 45mm)	.008" (0.20mm)	.177" (4.5mm)	1.102" (28mm)	1.713" (43.5mm)	M10 x 1
1.7717" - 2.756" (45 - 70mm)	.008" (0.20mm)	.217" (5.5mm)	1.102" (28mm)	1.732" (44mm)	M10 x 1
2.756" - 11.0236" (70 - 280mm)	.008" (0.20mm)	.217" (5.5mm)	1.378" (35mm)	1.732" (44mm)	M10 x 1