



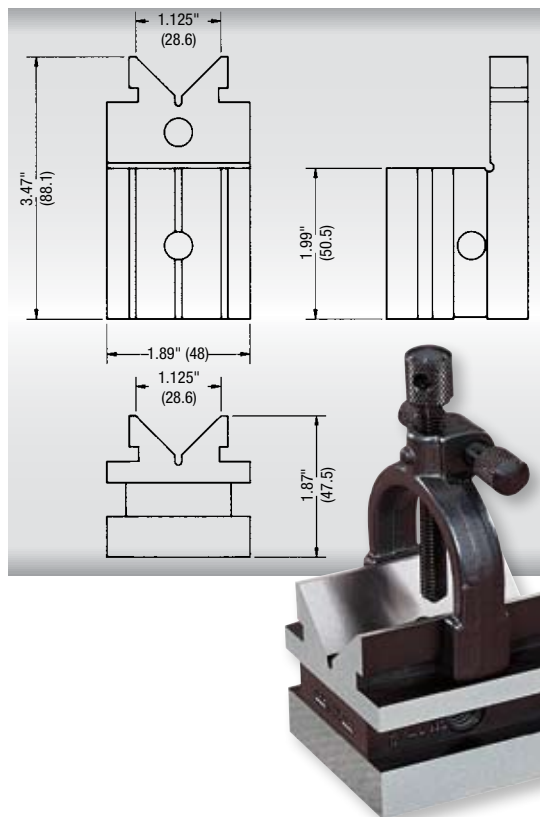
## 567 V-Block and Clamp

### 1-5/16" / 33mm Capacity

This is an improved V-block and clamp which has these very versatile features:

Can be used on its base, on the end or on either side

- The clamp is smaller than the outside width of the block, but has an adjustable side screw to support the block and prevent tilting
- The V at the stepped end is at right angles to the base and is handy for holding shouldered studs, pins, etc.
- A clearance hole for drilling or removing dowel pins is provided in the block
- The block has four 3/8-16 tapped holes, two in the base and one on each side for attachment to an angle iron. The angle iron holding the block can then be attached to a lathe faceplate or held by a magnetic chuck
- The clamp is a strong forging
- The block is hardened and precision ground. The sides are parallel and the V is central and parallel to the sides and base

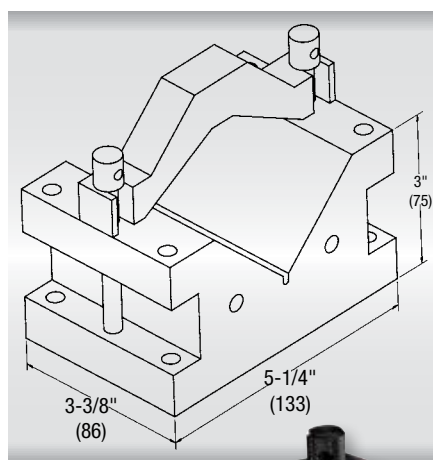


## 578 V-Block and Clamp for larger capacity work

### 4" / 100mm Capacity

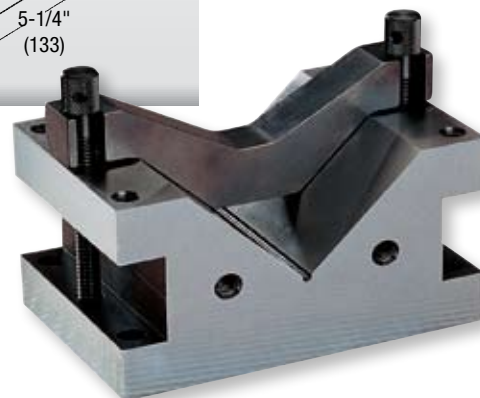
This is our largest capacity V-block, which is ideal for toolroom, inspection and production work. The features and advantages of this block are:

- Hardened steel
- Precision ground flat, square and parallel
- Rugged, reversible, hardened clamp can accommodate 9/16-4" (14-100mm) diameters of almost any shape of work
- No clamp interference when the block lies on either side
- Three available clamp positions
- Two tapped holes (3/8 x 16) in one end for mounting the V-blocks perpendicular to faceplates, etc.
- Available in matched pairs by special order



Block is 3-3/8" long x  
 5-1/4" wide x 3" high  
 (86 x 133 x 75mm)

Right: V-Block with  
 reversible clamp in  
 downward facing position  
 (Line drawing illustrates  
 clamp in upward facing  
 position)



#### 567 V-Block and Clamp

Capacity		Description	Catalog No.	EDP
Inch	mm			
1-5/16"	33mm	Complete Set with 1 V-Block and 1 Clamp	567	52588
		Clamp Only	567B	70885

#### 578 V-Block and Clamp

V-Block and Clamp for larger capacity work	578	64960
Clamp Only with Two Screws	578B	64988