

Willrich Precision 866-945-5742 email sales@willrich.com

Optional probes for MarSurf PS 10 / M 300 / M 300 C

Probes for various measuring tasks

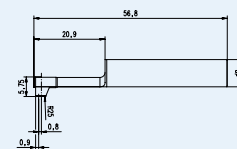
The P-probes are characterized by special construction features:

- Stylus tip geometry as per EN ISO 3274, standard $2\ \mu\text{m}/90^\circ$
- Measuring force of approx. 0.7 mN (as per EN ISO 3274)
- Reliable inductive converter
- Robust, rigid housing
- Self-aligning, elastic bearings
- Reliable plug and socket connections

Pick-up PHT 6-350 (standard probe)



System	Single-skid pick-up with spherical skid
Skid radius	in traversing direction 25 mm (.984"), at right angles 2.9 mm (.114")
Contact point	0.8 mm (.0315") in front of the stylus
Meas. range	350 μm (0.014")
Specification	for plane surfaces, bores with a dia. larger than 6 mm (.236") and a max. depth of 17 mm (.669"), grooves with a width larger than 3 mm (.118"); min. workpiece length = traversing length + 1 mm (.0394")



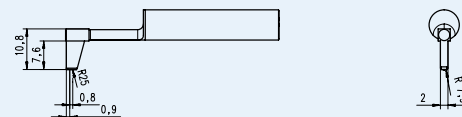
Order no. 6111520*

* Included in the scope of supply

Pick-up PHT 11-100



System	Single-skid pick-up with spherical skid
Skid radius	in traversing direction 25 mm (.984"), at right angles 2.9 mm (.114")
Contact point	0.8 mm (.0315") in front of the stylus
Meas. range	100 μm (.00394")
Specification	for plane surfaces, bores with a dia. larger than 11 mm (.433") and a max. depth of 14 mm (.551"), grooves with a width larger than 2.5 mm (.098")

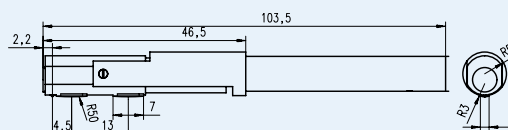


Order no. 6111524

Pick-up PT 150



System	Dual-skid pick-up with spherical skid
Skid radius	in traversing direction 50 mm (1.969"), at right angles 3 mm (.118")
Contact point	4.5 mm (.177") in front of the stylus
Meas. range	150 μm (.006")
Specification	for measurements on metal sheets and roller surfaces according to DIN EN 10049 (SEP). min. workpiece length = tracing length + 5 mm (.197")



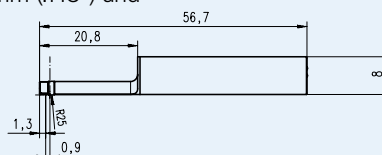
Order no. 6111523

Pick-up PHT 3-350



System Single-skid pick-up with spherical skid
 Skid radius in traversing direction 25 mm (.984"),
 at right angles 1.45 mm (.0571")
 Contact point 0.9 mm (.0354") in front of the stylus
 Meas. range 350 μm (0.014")
 Specification for bores with a dia. larger than 3 mm (.118") and
 a max. depth of 17 mm (.669 ")
 min. workpiece length =
 traversing length + 1 mm (.0394")

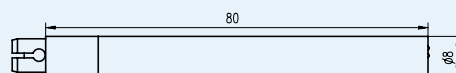
Order no. 6111521



Pick-up extension PHT (80 mm) for P probes



Order no. 6850540

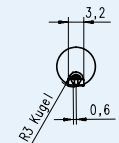
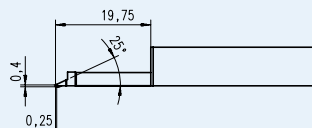


Pick-up PHTF 0.5-100



System Single-skid pick-up with spherical skid
 Skid radius in traversing direction 25 mm (.984"),
 at right angles 1.45 mm (.0571")
 Contact point 0.6 mm (.0236") at the side the stylus
 Meas. range 100 μm (.00394")
 Specification e.g. for gear tooth flanks with a modulus larger than 0.8
 Calibration via Geometric standard PGN

Order no. 6111522

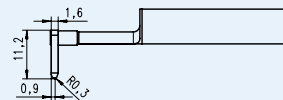


Pick-up PHTR-100



System Single-skid pick-up with lateral, spherical skid
 Skid radius in traversing direction 0.3 mm (.012")
 stylus radius 2 μm (.0008"), 90°
 Specification for measurements on concave and convex surfaces
 Calibration via Geometric standard PGN

Order no. 6111525



MarSurf PS 10 / M 300 Accessories

Measuring stand MarStand 815 GN

MarStand measuring stands offer high stability which ensures precise measurements.

- Rugged base ensures both maximum stability and sturdiness
- The upper side of the base has a convenient hand grip
- Support arm can be finely adjusted

total height with base	Order no.
300 mm	4413000
500 mm	4413001
750 mm	4413005



Stand adapter for MarSurf PS 10 / RD 18 C

Mount for cylindrical drive unit PS 10 / RD 18 C on measuring stand / height measuring instrument
Ø 8 mm

	Order no.
Stand adapter	6910435



Hand-held support for MarSurf PS 10 / RD 18 C

The hand-held support with its multiple contact surfaces offers various application possibilities.

	Order no.
Hand-held support for MarSurf PS 10 / RD 18 C	6910434
Height adjustment device suitable for hand-held (pair)	6850720



Pick-up protection for PS 10 / RD 18 / RD 18 C

	Order no.
Pick-up protection, steel	6850716
Pick-up protection with header vee-block, steel	6850715
Pick-up protection, plastic*	7028532
Pick-up protection header vee-block, plastic**	7028530

* With M 300 Set included in the scope of supply

** With M 300 and M 300 C Set included in the scope of supply



Illustration: 7028532

MarSurf PS 10 / M 300 / M 300 C Accessories

Mount for measuring stand ST

Accessories for measuring stands (these are not included in the measuring stands scope of supply):

Mount for MarSurf PS 10 / RD 18

The drive unit RD 18 can in the mount be pivoted and locked in any position ($\pm 15^\circ$)

Order no. 6910201

Mount for MarSurf RD 18 C

The drive unit RD 18 C can in the mount be pivoted and locked in any position ($\pm 15^\circ$)

Order no. 6851304

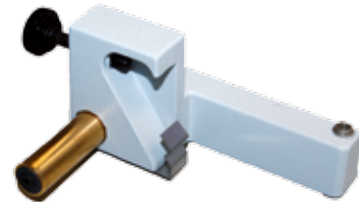


Illustration: 6910201

Measuring stand ST

Measuring stand ST-D

Height adjustment 0 to 300 mm, with a hand wheel
 Dimensions (L x W x H) 175 x 190 x 385 mm
 Weight ca. 3 kg

Order no. 6710803

Measuring stand ST-F

Grantie plate. The required measuring height can be adjusted with a hand wheel for convenient and accurate positioning of the drive unit.

Height adjustment 0 to 300 mm, with a hand wheel
 Dimensions (L x W x H) 400 x 300 x 415 mm
 Weight ca. 35 kg

Order no. 6710806

Measuring stand ST-G

Grantie plate with a 10 mm (.39 in) T-slot for mounting work pieces. The required measuring height can be adjusted with a hand wheel for convenient and accurate positioning of the drive unit.

Height adjustment 0 to 300 mm, with a hand wheel
 Dimensions (L x W x H) 500 x 300 x 415 mm
 Weight ca. 35 kg

Order no. 6710807



MarSurf PS 10 / M 300 Accessories

Mounting bracket for Digimar 814 SR

	Order no.
814 Sh Adjustable mounting bracket to connect the PS 10 / RD 18 to a 814 SR	2247086



814 Sh



RD 18

PS 10



Tilt adjustment

Height Measuring and Scribing Instrument Digimar 814 SR for MarSurf PS 10 / RD 18



REFERENCE



Functions:

RESET (Set the display to zero for relative measurement), ABS (Switch between relative and absolute measurement), mm/inch, Reference-Lock/Unlock, PRESET (To enter a numerical value), DATA (Data transmission via connection cable), Auto-ON/OFF

- Max. measuring speed 1.5 m/s (60"/s)
- High contrast Liquid Crystal Display with 12 mm high digits
- Sturdy heavy-duty base, easy to handle
- Hardened and lapped contact surface which produce both a smooth and even movement
- Slide and beam made of hardened stainless steel
- Hand crank for positioning and measuring
- Fine adjustment
- Locking screw
- Interchangeable scriber point, carbide tipped

• Supplied with:
Scriber point, cardboard box, battery and operating instructions

Order no.

814 SR Measuring range 350 mm	4426100
814 SR Measuring range 600 mm	4426101

MarSurf PS 10 / M 300 / M 300 C Accessories

Vee-block PP



With four different prisms for mounting axis-symmetrical workpieces with diameters from 1 mm to 160 mm (.0394" to 6.30").

Dimensions (L x W x H)
80 x 100 x 40 mm
3.91" x 3.15" x 1.58"
Weight 1.5 kg / 3.31 lb

Including damping springs for holding light workpieces in the prism.

Order no. 6710401

XY table CT



For mounting and aligning workpieces. Can be adjusted in two coordinates by 15 mm (.591").

Table surface 120 x 120 mm
Table surface 4.728" x 4.728"
with two brackets.

Order no. 6710529

Parallel vice PPS



For mounting rectangular and cylindrical workpieces

Jaw width 70 mm / 2.76"
Jaw height 25 mm / .984"
Span 40 mm / 1.58"
Total height 58 mm / 2.28"
Weight 2 kg / 4.41 lb

Order no. 6710604

Mini Precision Vise 109 PS as set

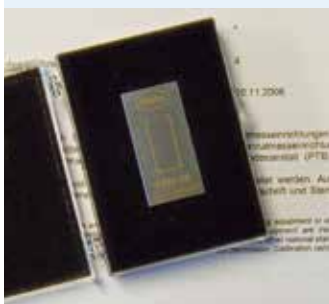


With mini precision vises. Depending on the version with prism jaws, carrier plates, stands and mini dividing attachment. Included in a plastic case

Width of jaws 15 / 25 / 35 mm

Order no. 4246819

Roughness standard PRN 10



With Mahr calibration certificate. Roughness standard with turned profile, chromed. Profile depth ca. 10 μm (.394 μinch), for checking the roughness measuring station.

Order no. 6820420*

* With the M 300 C Set this is included in the scope of supply.

Geometric Standard PGN



Surface standard with sinusoidal groove profile for dynamic monitoring of the roughness measuring station. Ra, Rz, Rmax. Optical flat. The following versions are available:

		Order no.
PGN 1	Profile depth ca. 1.5 μm (60 μinch), groove distance ca. 0.10 mm (0.0039")	6820602
PGN 3	Profile depth ca. 3 μm (120 μinch), groove distance ca. 0.12 mm (0.0047")	6820601
PGN 10	Profile depth ca. 10 μm (394 μinch), groove distance ca. 0.20 mm (0.0079")	6820605

Mahr-calibration certificate for PGN **9027715**

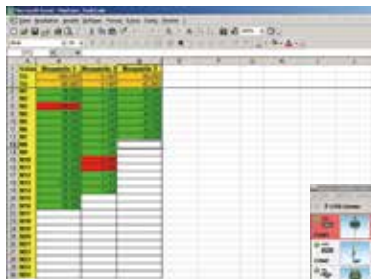
DKD (German Calibration Service) calibration certificate for PGN **6980102**

MarSurf PS 10 / M 300 / M 300 C Accessories

MarCom Software for PS 10 / M 300 / M 300 C

Software MarCom Professional

- Measured values can be directly transferred into MS Excel (from version 97) or into a text file or key code
- The measured values from each instrument can be sent to a different column, table or folder in Excel
- Data transmission via USB and/or 2 serial COM interfaces
- Flexible and comfortable data transmission: you can either press the "Data" button on the measuring instrument or on the data cable; via a computer keyboard, timer; or by activating a foot switch connected to an USB interface



Software MarCom Standard

(included with the USB Data Cable, for free download)

Features and system requirements are identical to MarCom Professional, except that it only has one USB and one serial COM interface.

Order no.

Software MarCom Professional
Data Cable 16 EXu incl. MarCom Standard

4102212
4102357

Software MarSurf M 300 Explorer

- The Software can be used to secure and document your measuring results and profiles (simply use Drag & Drop)
- The stored data can for example, be printed out on a A4 sheet or in any other format
- The measuring data can be displayed in different forms: profile and results, results, profile + MRC + results, statistics, and much more

Order no. **6910205**



Evaluation Software MarSurf XR 20

- An easy way to evaluate and document data based on MarWin
- Evaluation and documentation of the results can be conducted independently and away from the measuring station
- Filing including documentation is made simple
- Workstation version available

Order no. **6299054**

