

# 225 SERIES DEEP REACH, LONG HANDLE PRECISION BORE GAGES

Willrich Precision  
Ph 866-945-5742 sales@willrich.com

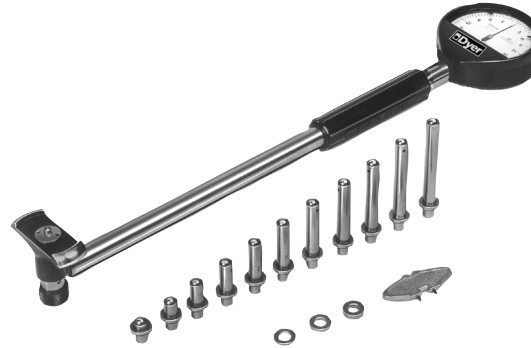
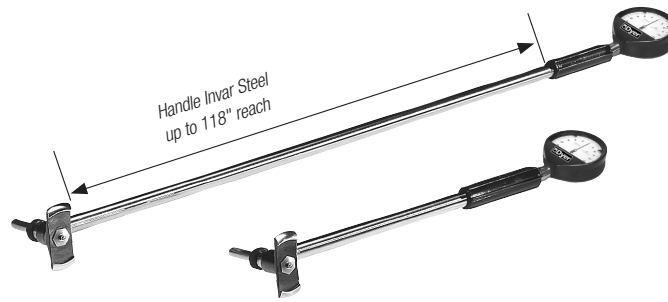


### Maximum Measuring Accuracy

Linear  $\pm 0.000040"$  (0.001 mm)  
Repeatability  $\pm 0.000010"$  (0.00025 mm)  
Gage R & R <10% measuring high tolerance bores

### MEASURE I.D.'S FROM 0.18" – 31.5" (4.5 mm – 800.00 mm), GAGES HAVE LARGE SELF-CENTERING BASE

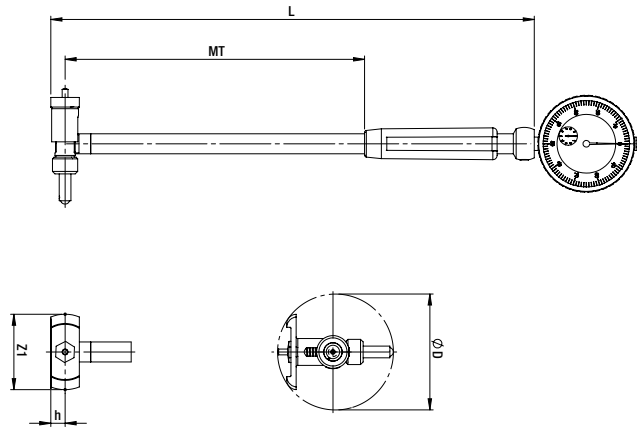
- Single-unit shaft lengths for the highest degree of measuring accuracy.
- Inch/Metric. Convert by changing dial indicator.
- In-between and longer sizes quoted on request.
- Large chrome plated self-centering base Rc 65, carbide ball contact points.
- Sealed construction, for use under dirty and oily conditions.



Model 225-035 Bore gage shown with optional indicator. Indicator offered separately.



Setting Master  
See Section F



Specifications				Order No. with Meas. Depth (MT) of 9.8" (250 mm)	Order No. with Meas. Depth (MT) of 19.7" (500 mm)	Order No. with Meas. Depth (MT) of 29.5" (750 mm)	Order No. with Meas. Depth (MT) of 39.4" (1000 mm)	Order No. with Meas. Depth (MT) of 49.2" (1250 mm)	Order No. with Meas. Depth (MT) of 59.1" (1500 mm)	Order No. with Meas. Depth (MT) of 78.7" (2000 mm)	Order No. with Meas. Depth (MT) of 98.4" (2500 mm)	Order No. with Meas. Depth (MT) of 118.1" (3000 mm)
Range Inch	Range mm	Z1	Max. Travel Contact Point									
0.18-0.24	4.5-6	0.15"	0.0138"	225-005	—	—	—	—	—	—	—	—
0.24-0.31	6-8	0.20"	0.0197"	225-010	225-055	225-120	225-185	—	—	—	—	—
0.31-0.47	8-12	0.26"	0.0276"	225-015	225-060	225-125	225-190	—	—	—	—	—
0.47-0.79	12-20	0.36"	0.0354"	225-020	225-065	225-130	225-195	—	—	—	—	—
0.71-1.38	18-35	0.58"	0.0512"	225-025	225-070	225-135	225-200	225-255	—	—	—	—
1.38-2.36	35-60	1.10"	0.0512"	225-030	225-075	225-140	225-205	225-260	225-300	225-340	225-380	225-420
1.97-3.94	50-100	1.77"	0.051"	225-035	225-080	225-145	225-210	225-265	225-305	225-345	225-385	225-425
1.97-5.91	50-150	1.77"	Var.	225-040	225-085	225-150	225-215	225-270	225-310	225-350	225-390	225-430
3.94-6.30	100-160	2.95"	0.063"	—	225-095	225-160	225-225	225-275	225-315	225-355	225-395	225-435
6.30-11.41	160-290	4.72"	0.063"	—	225-105	225-170	225-235	225-280	225-320	225-360	225-400	225-440
11.02-16.14	280-410	5.91"	0.102"	—	225-110	225-175	225-240	225-285	225-325	225-365	225-405	225-445
11.02-20.08	280-510	5.91"	0.102"	—	225-115	225-180	225-245	225-290	225-330	225-370	225-410	225-450
15.75-31.50	400-800	11.81"	0.102"	—	—	—	225-250	225-295	225-335	225-375	225-415	225-455