

Accessories for Micromar 44 A, 44 EWR, 844 A

Measuring Heads 44 Ak for 44 EWR

- Self-centering measuring head consists of 3 laterally positioned anvils, each are offset at intervals of 120°
- Anvils from 12 mm are carbide tipped
- From 12 mm, anvils can be used to measure to the base of a bore
- From 40 mm all measuring heads are made from aluminum to reduce weight

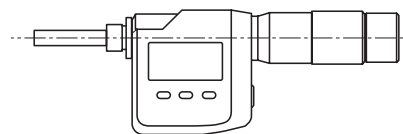
Measuring range		Order no.
mm	(inch)	
6 - 8	(.25 - .3125")	4190330
8 - 10	(.3125 - .4725")	4190331
10 - 12	(.4725 - .5")	4190332
12 - 16	(.5 - .625")	4190333
16 - 20	(.625 - .775")	4190334
20 - 25	(.775 - 1")	4190335
25 - 30	(1 - 1.2")	4190336
30 - 40	(1.2 - 1.6")	4190337
40 - 50	(1.6 - 2")	4190339
50 - 60	(2 - 2.35")	4190340
60 - 70	(2.35 - 2.75")	4190341
70 - 85	(2.75 - 3.35")	4190042
85 - 100	(3.35 - 4")	4190043
100 - 125	(4 - 4.9")	4190044
125 - 150	(4.9 - 5.9")	4190045
150 - 175	(5.9 - 6.9")	4190046
175 - 200	(6.9 - 7.9")	4190047

Ring Gages 355 E

- Can be used for 2 consecutive measuring ranges
- Manufacturing tolerance in accordance to DIN 2250C

dia. mm	Order no.	dia. mm	Order no.
8	4710026	60	4710080
10	4710030	85	4710105
16	4710036	125	4710121
25	4710045	175	4710122
40	4710060		

Basic Unit 44 EWg

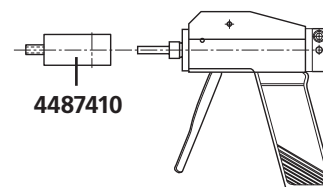


Threaded connection for changing the measuring heads

Measuring range		Order no.
mm		
6 - 20		4190106
20 - 100		4190107
100 - 200		4190108

Basic Unit Measuring Pistol 844 Ag

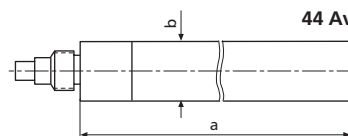
Threaded connection for changing the measuring heads. Any indicating instrument with an 8 mm mounting shank can be used.



Measuring range		Order no.
mm	(inch)	
6 - 100*	(.25 - 4.0")	4487630
20 - 100	(.775 - 4.0")	4487631
100 - 200	(4.0 - 7.9")	4487632

* Includes adapter 4487410

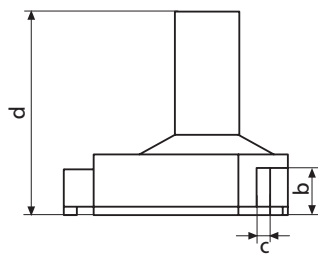
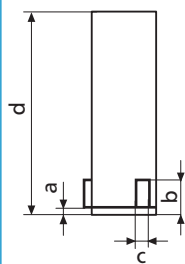
Depth Extension Rod 44 Av



Measuring range		Length a	dia. b	Order no.
mm	(inch)			
6 - 12	(.25 - .5")	75	5.8	4190090
12 - 20	(.5 - .775")	75	9.5	4190091
20 - 30	(.775 - 1.2")	150	19.0	4190092
30 - 200	(1.2 - 7.9")	150	22.0	4190093

Meas. range 6 - 12 mm

Meas. range 12 - 200 mm



Measuring range		a	b	c	d
mm					
6 - 8		1.5	4	1.5	58
8 - 10		1.8	4.3	1.5	58
10 - 12		1.8	4.3	1.5	58
12 - 16		-	6.5	4	64
16 - 20		-	6.5	4	64
20 - 25		-	9	4	68
25 - 30		-	9	4	68
30 - 40		-	15	5	76
40 - 50		-	15	5	76
50 - 60		-	18	5	79
60 - 70		-	18	5	79
70 - 85		-	23	7	97
85 - 100		-	23	7	97
100 - 125		-	27	7	132
125 - 150		-	27	7	132
150 - 175		-	27	7	132
175 - 200		-	27	7	132