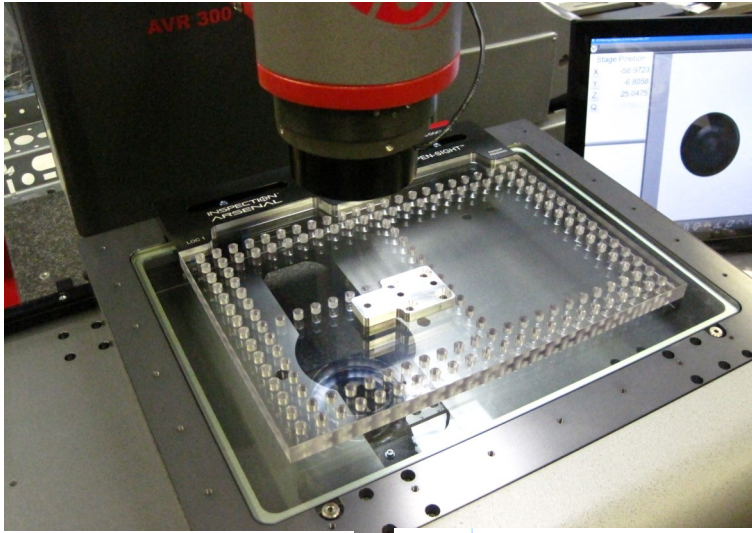


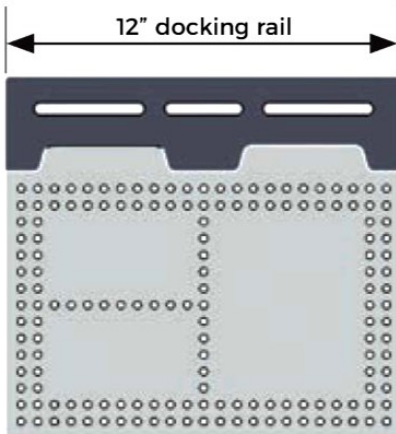
# Vision Inspection Fixture System

## AVR 300

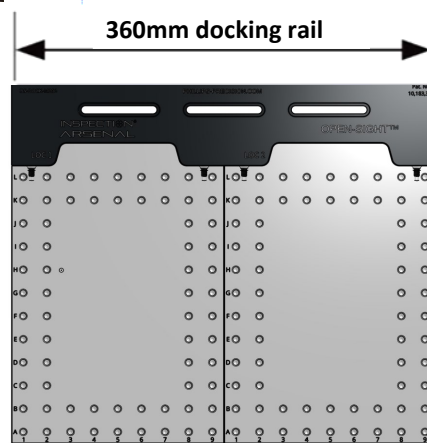


The Inspection Arsenal® LEAN fixture concept is available for Vision systems.

Docking rails fit the stage of any optical machine. Docking rails are black anodized aluminum. Clear, polycarbonate plates—rails and plates are .5" thick, 1/4-20" or M6 holes.



12" x 8" fixture plate



2x 180mm x 240mm fixture plates



VIS-KIT-01



VIS-KIT-02

*This bundled system includes a work-holding kit (two options available). Add docking rails on sides of stage to create more "locations" for inspection. Order blank plates and add only holes you need for greater savings.*

**OPEN-SIGHT™ BUNDLES: Docking Rail and Plate, Plus VISION KIT**

Part #	Inch	BUNDLE Description
SYS02_DK12VIS01	12" Dock, 12 x 8" plate + VIS-KIT-01	
SYS02_DK12VIS02	12" Dock, 12 x 8" plate + VIS-KIT-02	
Part #	Metric	BUNDLE Description
SYSM4_DK360V01	360 mm Dock , 2 plates + VIS-KIT-01M	
SYSM4_DK360V02	360 mm Dock , 2 plates + VIS-KIT-02M	



**WILLRICH PRECISION**  
**INSTRUMENT**  
 THINK MEASUREMENT... THINK WILLRICH