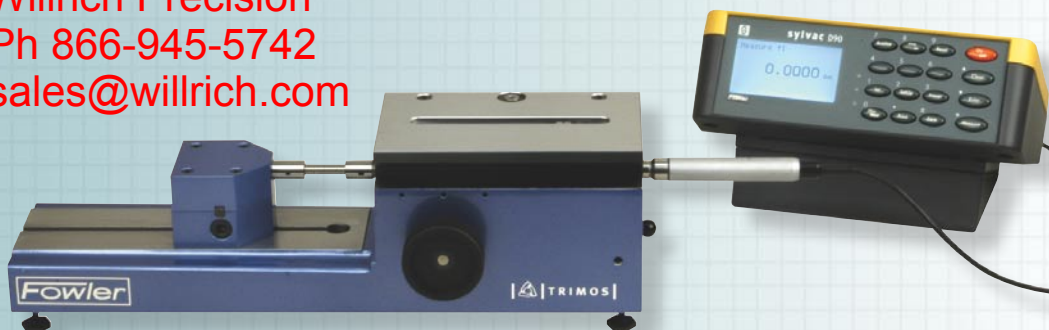




Trimos TELS Mini-Horizontal System

Willrich Precision
Ph 866-945-5742
sales@willrich.com



▲ Mini-Horizontal shown with optional Sylvac Display Unit No. 54-618-151 and probe No. 54-618-500 (not included).

The Fowler/Trimos Mini-Horizontal is a complete system for accurately measuring small internal and external sizes with a single gage.

Sylvac's electronic measuring system is recommended for use with the Mini-Horizontal because of its proven operational reliability. The display unit is the positive answer to a variety of measuring problems. In order to satisfy the demand of quality in production, a direct two-way RS232C data output allows connection to a printer or computer.

Using the multi-functional display unit D-100S (Fowler's 54-618-151) in connection with the Sylvac long travel probe 54-618-500, it is possible to obtain these basic functions.

Special Features:

- True inch/metric conversion with choice of 4 resolutions.
- Digital and analog display.
- Input of nominal sizes and tolerance limits.
- Classification (2 to 6 classes).
- Input of preselected values.
- Selection of measuring direction.
- Channel selection (1 to 64).
- Value hold.
- Locking of the functions and of inch or mm display.
- External contact connection (foot-pedal or computer).
- Print-out of all values/data processing.





Trimos TELS Mini-Horizontal System



Internal measurements:

.24"—4" (6—100mm) depending on accessories used

External measurements:

0—4" (0—100mm). The effective measurement allows a range of 1" (25mm) which corresponds to the range of Sylvac probe No. 54-618-500.

External measuring range

is increased by displacing the end stop (direct zero setting or setting of a preselected value).

Internal measuring range

is increased by displacing the measuring inserts (setting of a preselected value according to a ring gage).

Accuracy:

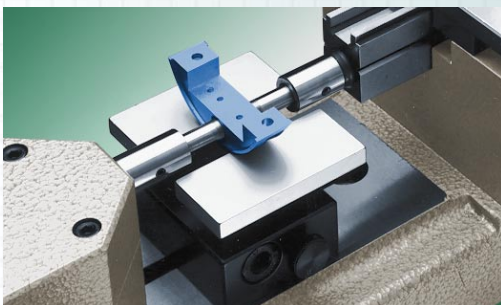
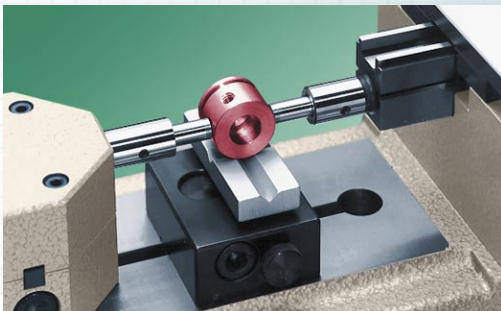
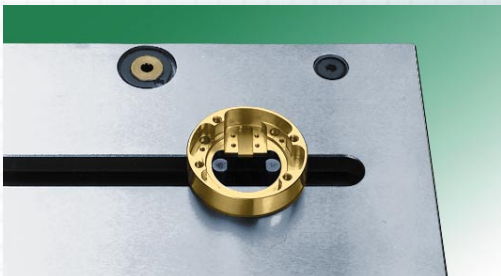
Within .00006" (1.5 μ) — corresponds to accuracy of Sylvac probe No. 54-618-500.

Resolution:

Using Display Unit No. 54-618-140 or No. 54-618-151, the resolution is .0001" or .00001" (.001 or .0001mm).

Mini-Horizontal Construction:

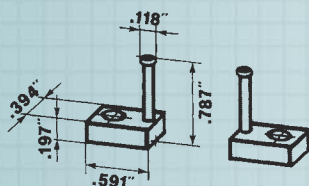
- Monoblock construction with probe guide track.
- Adjustable end-stop with anvil location.
- Control knob for the displacement of the guide track of the monoblock (probe release).
- Adjustable measuring pressure device 3-8N.
- Location for different measuring features, i.e. electronic probes or indicators, 8mm diameter.
- Interchangeable measuring anvils for external measurements (53-190-019 anvils—6.5mm diameter with tungsten carbide tipped measuring surface are supplied as standard).
- Interchangeable measuring inserts for internal measurements (53-190-020 Inserts—4.5mm diameter, rounded, are supplied as standard).
- Vertically adjustable table for internal measurement, hard chromed and ground surface, supplied as standard.



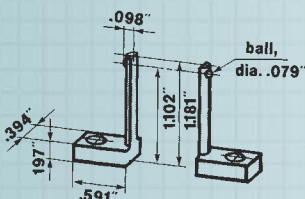
◆ Top two: Measurements of internal diameters, grooves and distances. Bottom two: Measurements of lengths and external diameters.



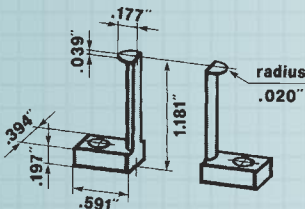
Internal Probes.



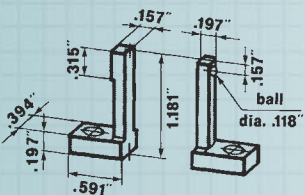
▲53-190-020
Internal Probe Set (2 pc.)
Standard, general purpose
probes, included w/system.



▲53-190-029
Internal Ball style Probe
Set (2 pc.). Features .079"
diam. ball on each probe.

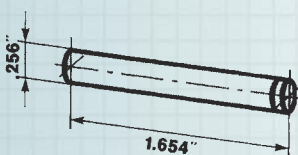


▲53-190-030
Internal Groove style Probe
Set. (2 pc.). Features thin,
half-round discs on ea. end.

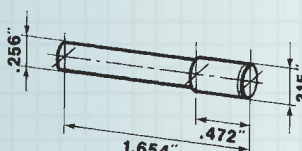


▲53-190-031
Internal combination Ball &
Flat Probe Set (2 pc.). Has
one side ball, one side flat.

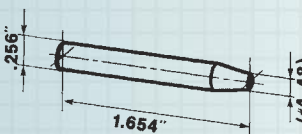
External Probes.



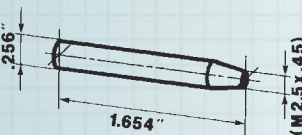
▲53-190-019
.256" diam. External Probe
Set (2 pc.). Included with
system. Carbide Tipped.



▲53-190-033
.315" Large Diameter
External Probe Set. (2 pc.).
Large surface, Carbide Tip.

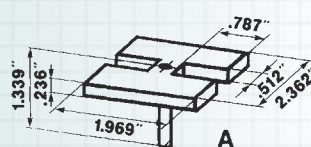


▲53-190-034
#4-48 threaded external
contact point holder (Ea.).
Accepts any shape point.

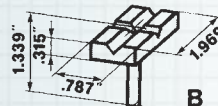


▲53-190-032
M2.5 x .45 thread external
contact point holder (Ea.).
Accepts any shape point.

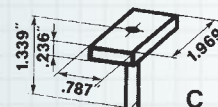
Supports & Tables.



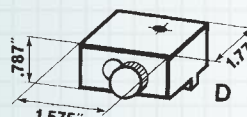
A



B



C



D

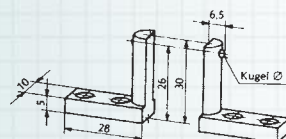
▲External Support System:

A. #53-190-025 Adjustable
Support with clearance.

B. #53-190-026. Adjustable
Support with crossed vee-
grooves at 90° angles.

C. #53-190-027. Adjustable
Support Plate, plain.

D. #53-190-028. Locking
base w/vert. adjustment for
#A, B & C. (Required in
order to use #A, B & C).

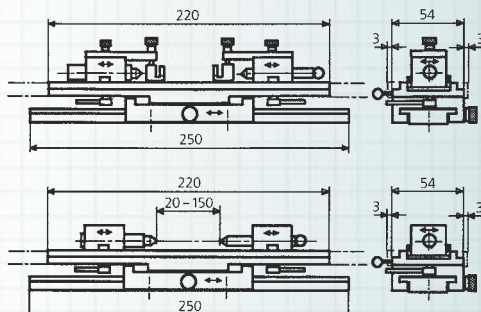


▲ No. 53-190-036 Large ball
probe. One set of reinforced mea-
suring inserts with ball contact for
internal measurements.

Fred V. Fowler Company, Inc.



Trimos *TELS* Mini-Horizontal System



No. 54-197-106



| Order No. | Description |
|---|--|
| Mini-Horizontal: | |
| 53-190-012 | Mini-Horizontal with internal support plate, standard internal & external probes |
| Accessories: | |
| 53-190-020 | Std. replacement internal probe set (2 pc. Included w/unit) |
| 53-190-029 | Internal ball probe set. (2 pc.) |
| 53-190-030 | Internal groove probe set. (2 pc.) |
| 53-190-031 | Internal ball /flat probe set. (2 pc.) |
| 53-190-036 | Large ball probe. (2 pc.) |
| 53-190-019 | .256" std. replacement external probe set (2 pc. included w/unit) |
| 53-190-033 | .315" large diameter external probe set. (2 pc.) |
| 53-190-034 | No. 4-48 thread external contact point holder (each) |
| 53-190-032 | M2.5 x .45 thread external contact point holder (each) |
| 53-190-037 | .080" flat carbide probe (each) |
| 53-190-025 | Adjustable H support with clearance |
| 53-190-026 | Adjustable support with crossed V-grooves |
| 53-190-027 | Adjustable plain support plate, plane |
| 53-190-028 | Locking adjustable base w/vertical adjustment for above supports |
| 54-197-106 | Floating measuring table |
| Electronic Digital AGD Indicators: | |
| 54-520-777 | Ultra-Digit IV. 1" (25mm) x .00005" (.001mm) |
| 54-520-888 | Ultra-Digit V. 1" (25mm) x .00005" (.001mm) or .0005" (.01mm) |
| 54-522-700 | Ultra-Logic. 1" (25mm) x .0001" (.002mm) |
| 54-522-800 | Ultra-Logic. 1" (25mm) x .00005" (.001mm) |
| Bushings/Extensions: | |
| 53-190-017 | Bushing for all AGD indicators to Mini-Horizontal |
| 53-190-018 | Rack/extension for all AGD indicators to Mini-Horizontal |
| Sylvac Electronics: | |
| 54-618-500 | Sylvac probe: 1" (25mm) range |
| 54-618-140 | Sylvac D-80 Indication Unit |
| 54-618-145 | Sylvac D-90 Indication Unit |
| 54-618-151 | Sylvac D-100S Indication Unit |