

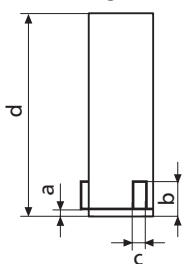
Accessories für 44 A, 44 EX, 844 A

Measuring Heads 44 Ak for 44 EX and 844 A

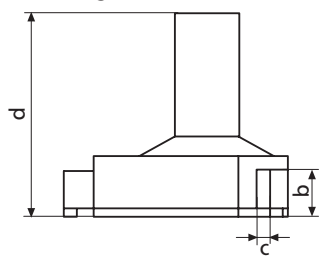
- Self-centering measuring head consists of 3 laterally positioned anvils, each are offset at intervals of 120°
- Anvils from 12.5 mm are carbide tipped
- From 12.5 mm, anvils can be used to measure to the base of a bore
- From 40 mm all measuring heads are made from aluminum to reduce weight

Measuring range mm	(inch)	Order no.
6 - 8	(.25 - .3125")	4190030
8 - 10	(.3125 - .4")	4190031
10 - 12.5	(.4 - .5")	4190032
12.5 - 16	(.5 - .625")	4190033
16 - 20	(.625 - .775")	4190034
20 - 25	(.775 - 1.0")	4190035
25 - 30	(1.0 - 1.2")	4190036
30 - 35	(1.2 - 1.4")	4190037
35 - 40	(1.4 - 1.6")	4190038
40 - 50	(1.6 - 2.0")	4190039
50 - 60	(2.0 - 2.35")	4190040
60 - 70	(2.35 - 2.75")	4190041
70 - 85	(2.75 - 3.35")	4190042
85 - 100	(3.35 - 4.0")	4190043
100 - 125	(4.0 - 4.9")	4190044
125 - 150	(4.9 - 5.9")	4190045
150 - 175	(5.9 - 6.9")	4190046
175 - 200	(6.9 - 7.9")	4190047

Meas. range 6 - 12.5 mm



Meas. range 12.5 - 200 mm



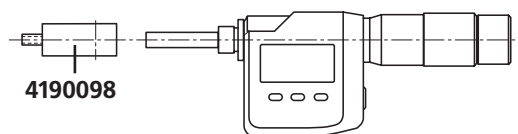
Measuring range mm	a	b	c	d
6 - 8	1.3	4.3	2	64
8 - 10	1.8	4.8	2	64
10 - 12.5	2	6	2.5	64
12.5 - 16	-	7	3	65
16 - 20	-	8.5	4	65
20 - 25	-	11	4	70
25 - 30	-	11	4	70
30 - 35	-	12	5	71
35 - 40	-	12	5	71
40 - 50	-	18	5	79
50 - 60	-	18	7	79
60 - 70	-	18	7	79
70 - 85	-	18	7	97
85 - 100	-	18	7	97
100 - 125	-	19	7	132
125 - 150	-	19	7	132
150 - 175	-	19	7	132
175 - 200	-	19	7	132

Ring Gages 44 Ae

- Can be used for 2 consecutive measuring ranges
- Manufacturing tolerance in accordance to DIN 2250C
- Includes a traceable calibration certificate

dia. mm	Order no.	dia. mm	Order no.
8	4190300	40	4190305
10	4190301	60	4190306
16	4190302	85	4190307
20	4190303	125	4190308
30	4190304	175	4190309

Basic Unit 44 EXg



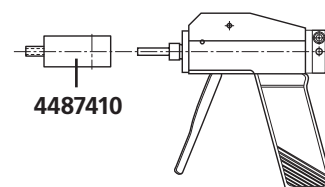
Threaded connection for changing the measuring heads.

Measuring range mm	(inch)	Order no.
6 - 12.5	(.25 - .5")	4190104
12.5 - 100*	(.5 - 4.0")	4190105
20 - 100	(.775 - 4.0")	4190101
100 - 200	(4.0 - 7.9")	4190102

* Includes adaptor 4190098

Basic Unit Measuring Pistol 844 Ag

Threaded connection for changing the measuring heads. Any indicating instrument with an 8 mm mounting shank can be used.



Measuring range mm	(inch)	Order no.
6 - 100*	(.25 - 4.0")	4487630
20 - 100	(.775 - 4.0")	4487631
100 - 200	(4.0 - 7.9")	4487632

* Includes adaptor 4487410

Depth Extension Rod 44 Av

Measuring range mm	(inch)	Length a mm	dia. b mm	Order no.
6 - 10	(.25 - .4")	75	5.8	4190090
10 - 20	(.4 - .775")	75	9.5	4190091
20 - 25	(.775 - 1")	150	19.0	4190092
25 - 200	(1 - 7.9")	150	22.0	4190093

