



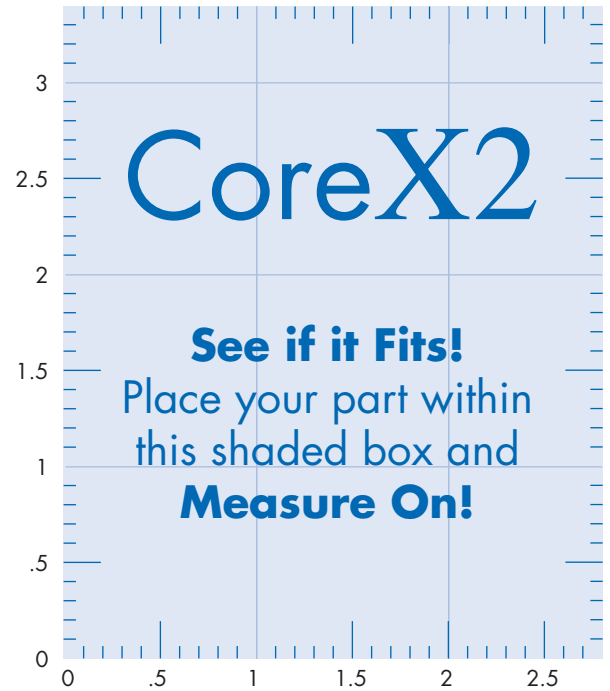
Willrich Precision 866-945-5742  
sales@willrich.com

OASIS  
INSPECTION SYSTEMS

**If your part fits  
Measure On.**

## Features:

- Larger Field Of View (FOV)
- Accurate to +/- .0002 inches
- Continuous Image Acquisition
- Simultaneous Measurement of Multiple Dimensions
- Automatic Inspection Reporting
- User Friendly Full-Feature Software

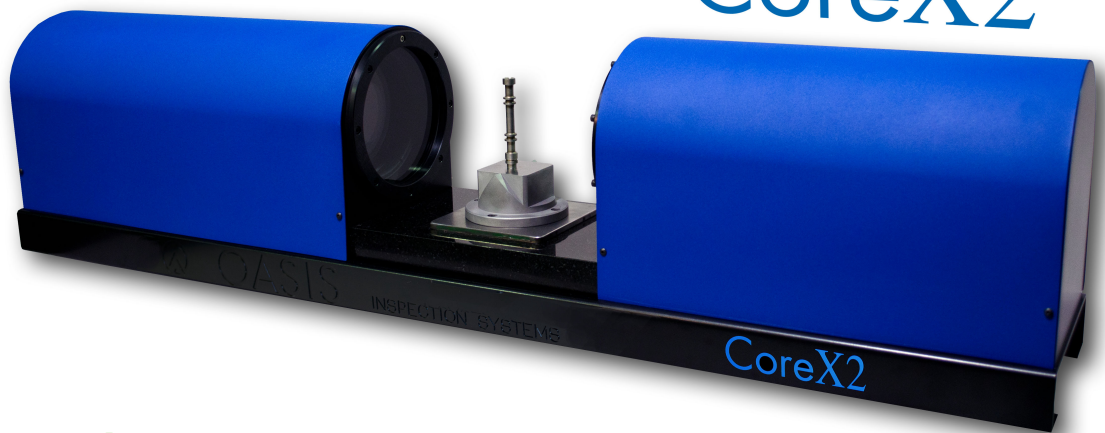


## **Bigger truly is Better!**

The **CoreX2** has a field of view of 3.40" x 2.80" allowing users to measure parts up to 3.375" in length and up to 2.75" in diameter and by using OASIS-Link you can even measure and report parts of up to 6.5" in length! The exciting thing about the new **CoreX2** is that manufacturers of larger parts will have the same speed and ease-of-use that our OASIS Inspection System offers to manufacturers of smaller parts.

*Introducing the wider, taller, larger field of view,*

# CoreX2



**Speed, Accurate, Easy.  
Measure On.**

### Larger FOV:

The CoreX2 is over 185% larger than what until now was our largest Field of View

### Accurate to +/- .0002 inches

A Color-coded display panel shows the actual measured dimension and the user-defined upper and lower limits (tolerances). Pass/Fail indications are easily identifiable for all measurements using Green (Pass), Yellow (Warning) and Red (Fail).

### Continuous Image Acquisition:

The CoreX2 captures images at a rate of 6 times per second utilizing an LED light source to collimate precise rays through a series of light diffusers and lenses that shine across a part to be inspected.

### Simultaneous Measurement of Multiple Dimensions:

By casting a shadow of a part to be inspected and capturing that image in a digital format, the powerful software behind the scenes converts the captured image into real dimensional data. The image is captured in real time so regardless of the number of dimensions every time a part is placed in the Inspection Zone, each and every measurement is simultaneously and instantly updated.

### Automatic Inspection Reporting:

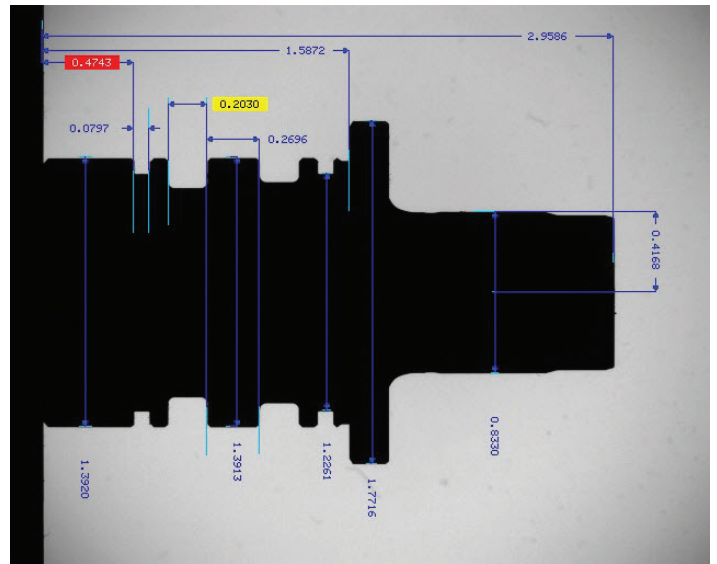
Measurements taken by the CoreX2 are recorded as parts are inspected. Those dimensions are imported into an Inspection Report which will create a custom report that can be printed or saved for future retrieval. The report can be created for the dimensions of a single inspected part or for a group of parts in an entire inspection run.

### User Friendly Full-Feature Software:

Detailed part programs can be created in minutes using Vertical and Horizontal Edge, Circle and Angle Tools. Also in CoreX2 software Tapers, Gage Line and Offset Diameters can be also measured.

### OASIS-Link:

Execute two or more part programs in automatic sequence and have the data reported and saved in a common file.



Name	Meas'd	LSL	Status	USL
DIA01	1.3920	1.3900	Pass	1.3970
HGT01	0.0797	0.0719	Pass	0.0819
HGT02	0.2030	0.1900	Warning	0.3900
DIA02	1.3913	1.3900	Pass	1.3950
DIA03	1.7716	1.7500	Pass	1.7800
DIA04	1.2261	1.2210	Pass	1.2290
DIA05	0.8330	0.8280	Pass	0.8380
DIST01	2.9586	2.9545	Pass	2.9645
DIST02	0.4743	0.4000	Fail	0.4700
DIST03	0.2696	0.2690	Pass	0.2730
DIST04	1.5872	1.5823	Pass	1.5923
DIST05	0.4168	0.4118	Pass	0.4218

### IN THE BOX:

- CoreX2 - 46" wide x 9" deep x 12" high (weighs 72 lbs)
- Computer
- Monitor
- Keyboard
- Mouse
- Quick Start Guide



Contact: Willrich Precision 866-945-5742 or email: [Sales@willrich.com](mailto:Sales@willrich.com)

**Speed, Accurate, Easy.  
Measure On.**