

BESTEST - inch standard models

BESTEST indicators with top mounted dials are supplied with a rectangular bar, swivel clamp, contact point wrench and a certificate of accuracy and traceability in a fitted case. Contact points for models on this page are 1/2" (12.5 mm) long. Carbide tips are .080" (2 mm) diameter.

Available with either 1" (28 mm) or 1-1/2" (38 mm) diameter dials.



599-7032-3

			in	in	Ø in		in
599-7029-3	45977	.030	.001	1	0 ÷ 15 ÷ 0	1/2	
599-7030-3	45978	.030	.0005	1	0 ÷ 15 ÷ 0	1/2	
599-7032-3	45980	.008	.0001	1	0 ÷ 4 ÷ 0	1/2	
599-7023-3	46400	.008	.0001	1-1/2	0 ÷ 4 ÷ 0	1/2	
599-7033-3	45981	.008	.00005	1-1/2	0 ÷ 4 ÷ 0	1/2	
599-7031-3	45979	.030	.0005	1-1/2	0 ÷ 15 ÷ 0	1/2	

- DIN 2270 NFE 11-053
- Lever system with friction drive to prevent overload
- Certificate of accuracy and traceability
- Rotating dial
- Movement with patented shock proof system
- Accuracy: see table on page G-3
- Very low measuring force, see technical data table.
- Supplied in a plastic case together with:
1 contact point 1/2 in with a .080 in dia.
1 rectangular bar
1 swivel clamp
1 contact point wrench

BESTEST - metric standard models

BESTEST indicators with top mounted dials are supplied with a rectangular bar, swivel clamp, contact point wrench and a certificate of accuracy and traceability in a fitted case. Contact points for models on this page are 1/2" (12.5 mm) long. Carbide tips are .080" (2 mm) diameter.

Available with either 1" (28 mm) or 1-1/2" (38 mm) diameter dials.



599-7030-13

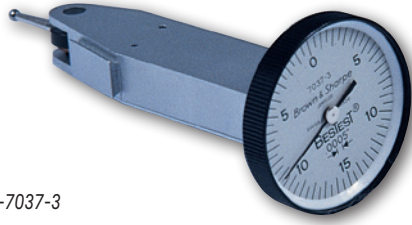
			mm	mm	Ø mm		mm
599-7030-13	45984	.8	.01	28	0 ÷ .4 ÷ 0	12.54	
599-7031-13	45985	.8	.01	38	0 ÷ .4 ÷ 0	12.54	
599-7033-13	45987	.2	.002	38	0 ÷ 100 ÷ 0	12.54	
599-7032-13	45986	.2	.002	28	0 ÷ 100 ÷ 0	12.54	

- DIN 2270 NFE 11-053
- Lever system with friction drive to prevent overload
- Certificate of accuracy and traceability
- Rotating dial
- Movement with patented shock proof system
- Accuracy: see table on page G-3
- Very low measuring force, see technical data table.
- Supplied in a plastic case together with:
1 contact point 12.5 mm with a 2.2 mm dia.
1 rectangular bar
1 swivel clamp
1 contact point wrench

- DIN 2270 NFE 11-053
- Lever system with friction drive to prevent overload
- Certificate of accuracy and traceability
- Rotating dial
- Movement with patented shock proof system
- Accuracy: see table on page G-3
- Very low measuring force, see technical data table.
- Supplied in a plastic case together with:
1 contact point 1/2 in with a .080 in dia.
1 rectangular bar
1 swivel clamp
1 contact point wrench

BESTEST - End Mounted Dials

All BESTEST indicators with end mounted dials come with contact points 1/2" long with a carbide tip .080" diameter, a No. 599-7054 universal dovetail mounting attachment, a contact point wrench and a certificate of accuracy and traceability in a fitted case.



599-7037-3

			in	in	Ø in		in	in	in
599-7037-3		50437	.030	.0005	1	0 ÷ 15 ÷ 0	1/2	.0001	.0005
599-7024-3		46046	.008	.0001	1-1/2	0 ÷ 4 ÷ 0	1/2	.00002	.0001
599-7038-3		50436	.008	.00005	1-1/2	0 ÷ 4 ÷ 0	1/2	.00002	.0001

- DIN 2270 NFE 11-053
- Lever system with friction drive to prevent overload
- Certificate of accuracy and traceability
- Rotating dial
- Movement with patented shock proof system
- Accuracy: see table on page G-3
- Very low measuring force, see technical data table.
- Supplied in a plastic case together with:
1 contact point 1/2 in with a .080 in dia.
1 rectangular bar
1 swivel clamp
1 contact point wrench

BESTEST - Side Mounted Dials

BESTEST indicators with side mounted dials. Contact points are 1/2" long. Carbide tip is .080" diameter. Ideal for height gages, and transfer gages. Supplied with a rectangular bar, swivel clamp, contact point wrench, and a certificate of accuracy and traceability in a fitted case.



01820014

			in	in	Ø in		in	in	in
599-7021-3		50566	.030	.0005	1-1/2	0 ÷ 15 ÷ 0	1/2	.0001	.0005
599-7022-3		50567	.008	.00005	1-1/2	0 ÷ 4 ÷ 0	1/2	.00002	.0001
01820014		40511	.030	.0005	1	0 ÷ 15 ÷ 0	1/2	.0001	.0005



BESTEST - 5 Series (Black Face)

Easy-to-read, satin-black, "jet console" face, BESTEST® indicators with high visibility orange hand.

BESTEST -5 sets are furnished with a .080" carbide contact point, a .250" diameter extension with dovetail, point wrench and a certificate of accuracy and traceability in a durable molded case.



599-7030-5

No	EDP					
		in	in	∅ in		in
599-7029-5	51732	.030	.001	1	0 ÷ 15 ÷ 0	1/2
599-7030-5	51733	.030	.0005	1	0 ÷ 15 ÷ 0	1/2
599-7031-5	51734	.030	.0005	1-1/2	0 ÷ 15 ÷ 0	1/2
599-7032-5	51737	.008	.0001	1	0 ÷ 4 ÷ 0	1/2
599-7033-5	51738	.008	.00005	1-1/2	0 ÷ 4 ÷ 0	1/2
599-7034-5	51735	.020	.0005	1	0 ÷ 10 ÷ 0	1-7/16
599-7035-5	51736	.020	.0005	1-1/2	0 ÷ 10 ÷ 0	1-7/16

- DIN 2270 NFE 11-053
- Lever system with friction drive to prevent overload
- Certificate of accuracy and traceability
- Rotating dial
- Movement with patented shock proof system
- Accuracy: see table on page G-3
- Very low measuring force see table on page G-3
- Supplied in a plastic case together with:
1 contact point .250 in with a .080 in dia.
1 dovetail
1 contact point wrench

BESTEST - 6 Series (White Face)

BESTEST -6 sets are furnished with 3 carbide contact points, .040", .080" and .120", one 1/2" long x .25" diameter extension with dovetail, one 1/2" long x .22" diameter extension with dovetail, a contact point wrench and a certificate of accuracy and traceability in a durable molded case.



599-7032-6

No	EDP					
		in	in	∅ in		in
599-7030-6	25925	.030	.0005	1	0 ÷ 15 ÷ 0	040; .080 & .120
599-7031-6	25926	.030	.0005	1-1/2	0 ÷ 15 ÷ 0	040; .080 & .120
599-7032-6	25929	.008	.0001	1	0 ÷ 4 ÷ 0	040; .080 & .120
599-7023-6	25923	.008	.0001	1-1/2	0 ÷ 4 ÷ 0	040; .080 & .120

- DIN 2270 NFE 11-053
- Lever system with friction drive to prevent overload
- Certificate of accuracy and traceability
- Rotating dial
- Movement with patented shock proof system
- Accuracy: see table on page G-3
- Very low measuring force see table on page G-3
- Supplied in a plastic case together with:
3 carbide contact point .250 in with a .04 / .080 / .120 in dia.
2 dovetails
1 contact point wrench

- DIN 2270 NFE 11-053
- Lever system with friction drive to prevent overload
- Certificate of accuracy and traceability
- Rotating dial
- Movement with patented shock proof system
- Accuracy: see table on page G-3
- Very low measuring force see table on page G-3
- Supplied in a plastic case together with: 3 carbide contact point .250 in with a .04 / .080 / .120 in dia. 2 dovetails 1 contact point wrench



BESTEST - 14 Series (White Face)

BESTEST -14 sets are furnished with 3 carbide contact points, .040", .080" and .120", one 1/2" long x .25" diameter extension with dovetail, one 1/2" long x .22" diameter extension with dovetail, a contact point wrench and a certificate of accuracy and traceability in a durable molded case.

No	EDP					
		mm	mm	Ø mm		mm
599-7030-14	25927	.8	.01	28	0 ÷ .4 ÷ 0	040; .080 & .120
599-7031-14	25928	.8	.01	38	0 ÷ .4 ÷ 0	040; .080 & .120
599-7032-14	25930	.2	.002	28	0 ÷ 100 ÷ 0	040; .080 & .120

- DIN 2270 NFE 11-053
- Lever system with friction drive to prevent overload
- Certificate of accuracy and traceability
- Rotating dial
- Movement with patented shock proof system
- Accuracy: see table on page G-3
- Very low measuring force see table on page G-3
- Supplied in a plastic case together with: 3 carbide contact point 1-7/16 in length with .080 in dia. 1 rectangular bar 1 swivel clamp 1 contact point wrench



599-7035-3

BESTEST - Extra long contact points

BESTEST indicators with top mounted dials. Contact points are 1-7/16" long. Carbide tip is .080" diameter. Supplied with a rectangular bar, swivel clamp, contact point wrench and a certificate of accuracy and traceability in a fitted case.

No	EDP					
		in	in	Ø in		in
599-7034-3	45982	.020	.0005	1	0 ÷ 10 ÷ 0	1-7/16
599-7035-3	45983	.020	.0005	1-1/2	0 ÷ 10 ÷ 0	1-7/16

BESTEST - Universal Test Indicators

Full jewelled movement in a universal indicator



599-7739

No	EDP	=	Designation
599-7739	44892		Inch Indicator Set complete with case
599-7739-10	45705		Metric Indicator Set complete with case
SET COMPOSITION:			
599-7739-1	44893		Swivel clamp for universal test indicator
599-7739-2	44894		Clamp with 1-5/16 in range and 1/4-28 threaded hole for universal test indicator
599-7739-3	44895		Hole measuring attachment with indicator mount for universal test indicator
599-7739-4	44896		Measuring bar with tapped through holes for universal test indicator
599-7739-5	44897		Long holding rod for universal test indicator
599-7739-6	44898		Short holding rod for universal test indicator
599-7739-9999	44899		Fitted case for universal test indicator and accessories

Dial Test Indicators - BESTEST Accessories

Complete set of accessories



No	EDP	=	Designation
599-7041	44856		Complete set of accessories for use with BESTEST/TESATAST dial test indicators
COMPOSED OF:			
599-7046	44861		Rectangular bar 3/16" thick x 5/16" high x 3" long with .220" diameter stud
599-7048	44863		Round bar 7/32" diameter with .163" stepped end; .220" diameter stud; 2-7/8" long
599-7042	44857		Swivel support (short) 3/8" diameter x 1" long shank
599-7043	44858		Angle attachment 3/8" hole with 3/8" diameter x 1" long shank
599-7052	44867		Extension with dovetail .220" diameter x 1/2" long shank
599-7053	44868		Extension with dovetail .250" diameter x 1/2" long shank
599-7030-40	44827		Carbide ball contact point .040" diameter x 1/2" long
599-7030-120	44829		Carbide ball contact point .120" diameter x 1/2" long
OPTIONAL ACCESSORIES:			
599-7047	44862		Rectangular bar: Furnished with all front-mounted BESTEST indicators. 1/4" thick x 1/2" high x 3" long with .220" diameter stud
599-7044	44859		Swivel support (long): 3/8" diameter x 3-5/8" long shank

- DIN 2270 NFE 11-053
- Lever system with friction drive to prevent overload
- Certificate of accuracy and traceability
- Identification number
- Rotating dial
- Movement with shock proof system
- .15 N
- Supplied in a plastic case together with:
1 contact point 1/2 in with a .080 in dia.
1 rectangular bar
1 swivel clamp
1 contact point wrench

VALUELINE - inch standard models



01889018



01889023

No	EDP							
01889018	47439	.030	.0005	1.26	0 ÷ 15 ÷ 0	.70	.00012	.00012
01889023	47440	.030	.0005	1.54	0 ÷ 15 ÷ 0	.70	.00012	.00012

- DIN 2270 NFE 11-053
- Lever system with friction drive to prevent overload
- Declaration of conformity
- Rotating dial
- Movement with patented shock proof system
- Accuracy: see table on page G-3
- Very low measuring force see table on page G-3
- Supplied in a plastic case together with:
1 Insert with a 2 mm dia.
1 Wrench (No. 01860307)
1 Mounting rod 8 mm dia. (No. 01840105)

TESATAST - inch standard models

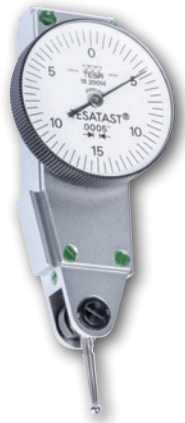


01820006

No	EDP					
01820006	40503	.030	.0005	1.1	0 ÷ 15 ÷ 0	1/2
01820007	40504	.030	.0005	1.5	0 ÷ 15 ÷ 0	1/2
01820009	40506	.020	.0005	1.5	0 ÷ 10 ÷ 0	1 7/16
01820010	40507	.030	.001	1.1	0 ÷ 15 ÷ 0	1/2
01820011	40508	.008	.0001	1.1	0 ÷ 4 ÷ 0	1/2
01820012	40509	.008	.0001	1.5	0 ÷ 4 ÷ 0	1/2
01820013	40510	.008	.00005	1.5	0 ÷ 4 ÷ 0	1/2



TESATAST - inch lateral models



01820014

No	EDP					
		in	in	∅ in		in
01820014	40511	.030	.0005	1.1	0 ÷ 15 ÷ 0	1/2

- DIN 2270 NFE 11-053
- Lever system with friction drive to prevent overload
- Declaration of conformity
- Rotating dial
- Movement with patented shockproof system
- Accuracy: see table on page G-3
- Very low measuring force see table on page G-3
- Supplied in a plastic case together with:
1 Insert with a 2 mm dia.
1 Wrench (No. 01860307)
1 Mounting rod 8 mm dia. (No. 01840105)

COMPAC Series 210 – inch standard models



213GLA



214A

No	EDP						
		in	in	∅ in		in	in
214A	27707	.06	.0005	1.063	0÷10÷20	.00015	.00015
214GA	27708	.06	.0005	1.575	0÷10÷20	.00015	.00015
213LA	27706	.12	.0005	1.063	0÷20÷40	.00015	.00025
213GLA	27705	.12	.0005	1.575	0÷20÷40	.00015	.00025
215A	27710	.024	.0001	1.063	0÷20÷40	.00005	.0001
215GA	27712	.024	.0001	1.575	0÷20÷40	.00005	.0001

- DIN 2270 and factory standard
- Contact points with tungsten carbide ball tips
- Friction lever system to prevent overload
- Inspection report with a declaration of conformity
- Rotating dial
- Supplied in a plastic storage case including:
1 contact point, 2 mm dia.
1 rigid stem 8 mm dia., L = 15 mm, No. 01840107,
1 rigid stem 4 mm dia., L = 15 mm, No. 01840109 (except for series 220).
- Dimensions: see page G-11

N DIN 2270 and factory standard

Contact points with tungsten carbide ball tips

Friction lever system to prevent overload

Inspection report with a declaration of conformity

Rotating dial

Supplied in a plastic storage case, including:
 1 contact point, 2 mm dia.
 1 rigid stem 8 mm dia., L = 15 mm, No. 01840107,
 1 rigid stem 4 mm dia., L = 15 mm, No. 01840109
 (except for series 220).

Dimensions: see page G-11

The original inserts mounted on all indicators are fully interchangeable with inserts with different diameter tips as long as the insert has the same nominal length.

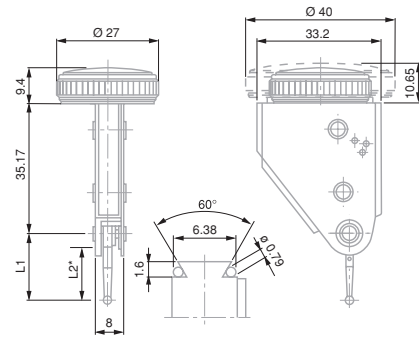
M1.6 coupling thread

COMPAC Series 220 – inch perpendicular models

COMPAC Series 220 – Perpendicular models, imperial



224GA



*L2 voir tableau des touches pour indicateurs à levier COMPAC

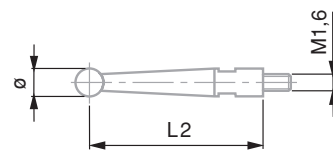
No	EDP	in	in	Ø in	in	in	in	in
224GA	27721	.06	.0005	1.575	.02	0÷10÷20	.72	.00015
223GLA	27718	.12	.0005	1.575	.04	0÷20÷40	1.44	.00025

Measuring inserts for COMPAC imperial models

Measuring inserts for COMPAC imperial models



No	Dimensions
	Diameter, in L, in
01866010	.03 .675
01866005	.08 .72
01866011	.03 .72
01866009	.08 1.44
01866007	.08 .675
01866024	.03 1.44
01866008	.08 1.8



Clamps

Clamps for Dial Test BESTEST Indicators



No

EDP

=

599-7055

44870

Universal swivel clamp

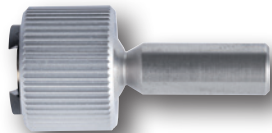
599-7045-1

51853

Swivel clamp for use with front mounted BESTEST/TESATAST dial test indicators

Brackets

Brackets for Dial Test BESTEST Indicators



No

EDP

=

599-980-10

44740

Lug-back bracket accessory
for BESTEST/TESATAST indicators
and dovetail mounting electronic gage heads

Attachments



01840202

<i>No</i>	EDP	=	Designation
599-7043	44858		Angle attachment 3/8" hole with 3/8" diameter x 1" long shank
599-7054	44869		Universal dovetail attachment accessory for use with BESTEST/TESATAST dial test indicators



INTERAPID 312 - inch regular models

These dial test indicators have particularly large measuring spans:

- Robust construction
- Mounting through dovetail clamp and Ø 4 mm swivelling shank
- Bidirectional measuring
- Continuous clockwise pointer rotation



074111370

No	EDP					
		in	in	Ø in		in
074111370	42774	.060	.0005	1-1/2	0 ÷ 15 ÷ 0	.65
074111371	86150	.060	.0005	1-1/5	0 ÷ 15 ÷ 0	.65
074111965	41716	.060	.0005	1-1/2	0 ÷ 15 ÷ 0	2.675
074111374	41682	.060	.001	1-1/5	0 ÷ 15 ÷ 0	.65
074111372	41680	.016	.0001	1-1/2	0 ÷ 4 ÷ 0	.65
074111373	41681	.016	.0001	1-1/5	0 ÷ 4 ÷ 0	.65

- Lever system with friction drive to prevent overload
- Declaration of conformity
- Rotating dial
- Accuracy: see table on page G-7
- Very low measuring force see table on page G-3
- Supplied in a plastic case with: 1 with a Ø 2mm insert in hardened steel. 1 stylus key No. 01860307

INTERAPID 312 - inch perpendicular models



074111377

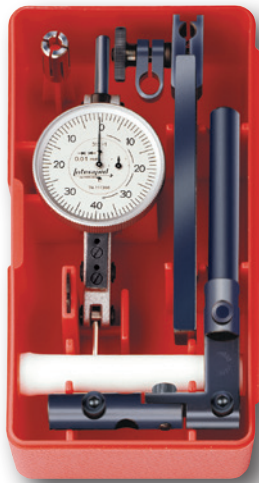
No	EDP					
		in	in	Ø in		in
074111377	41685	.060	.0005	1-1/2	0 ÷ 15 ÷ 0	.65
074111378	41686	.060	.0005	1-1/5	0 ÷ 15 ÷ 0	.65
074111958	41715	.060	.0005	1-1/2	0 ÷ 15 ÷ 0	2.77
074111379	41687	.060	.001	1-1/5	0 ÷ 15 ÷ 0	.65
074111957	41714	.016	.0001	1-1/2	0 ÷ 4 ÷ 0	.65

- Lever system with friction drive to prevent overload
- Declaration of conformity
- Rotating dial
- Accuracy: see table on page G-7
- Very low measuring force see table on page G-3
- Supplied in a plastic case with: 1 hardened steel insert, 2 mm diameter tip, 1 key No. 01860307

Declaration of conformity

Technical data as listed under each single dial gauge

Full INTERAPID 312 Sets with Accessories - regular inch models



FULL SETS CONSIST OF:

No	EDP	=
		INTERAPID 312 dial test indicators as shown in the table hereafter
074106331	41651	Height gage bar with clamp
074108943	51665	Reducing sleeve, in
074108942	51664	Adapter sleeve 5/32" - 3/8"
074106931	41656	Axial support - .375 stem
074106026	41650	Axial support - 8 mm stem
074111474	41688	Case for contact points
01860307	40555	Contact point wrench

INTERAPID 312 - regular inch models

No	EDP	=
074111508	41706	074111370 & set
074111509	41707	074111371 & set
074111510	41708	074111372 & set

INTERAPID 312 - perpendicular inch models

No	EDP	=
074111513	41710	074111377 & set

