



**WILLRICH PRECISION
INSTRUMENT**
THINK MEASUREMENT... THINK WILLRICH

Ph 866-945-5742 email:sales@willrich.com

Mitutoyo

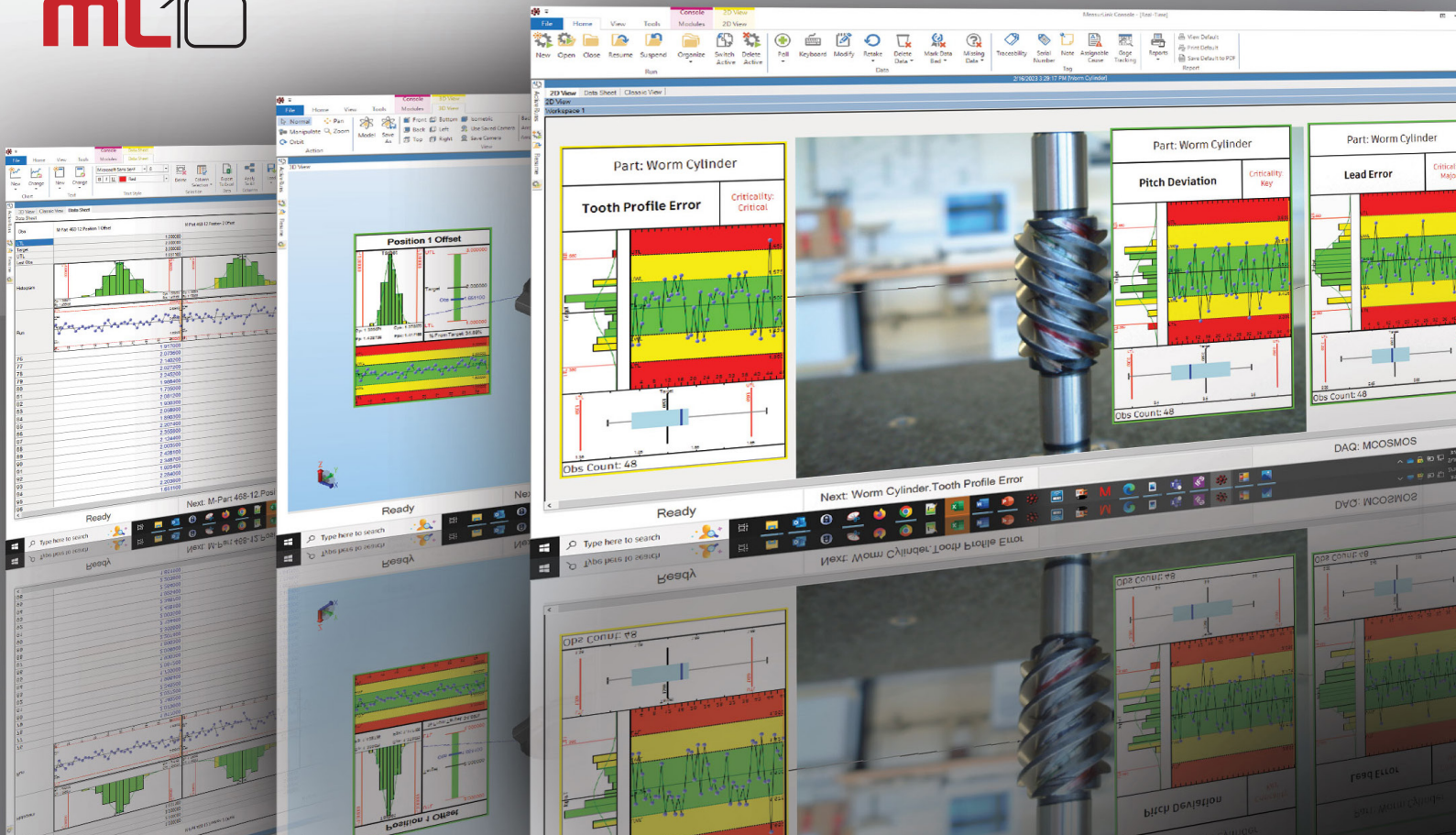
NEW PRODUCT INFORMATION

MeasurLink® 10

Real-Time Statistical Process Control and Data Collection Software



ML10



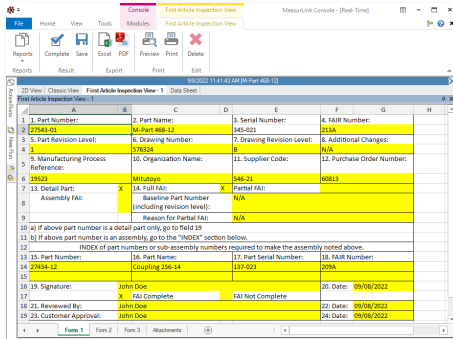
SMALL TOOL INSTRUMENTS AND DATA MANAGEMENT

Collect, Unify, Analyze and Visualize



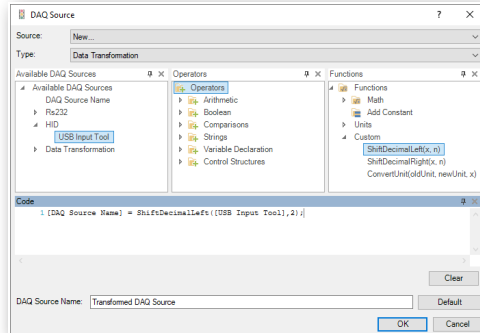
Below is a brief example of some of the new functions and features included in this newest release of MeasurLink®, the Mitutoyo Real-Time SPC and Data Collection software. Please visit our website for a copy of our release notes that detail all the other new functions and features. www.measurlink.com

AS9102 First Article Inspection



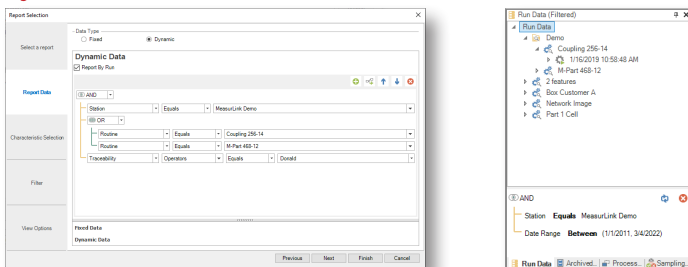
First article inspection view in Real-Time or Process Analyzer provides a clear and concise approach for completing FAI reports that align with the AS9102 requirements. This feature includes forms 1, 2, and 3 with options to export to Excel or PDF and allows users to search first article inspection information and production data in one location.

Data Transformation



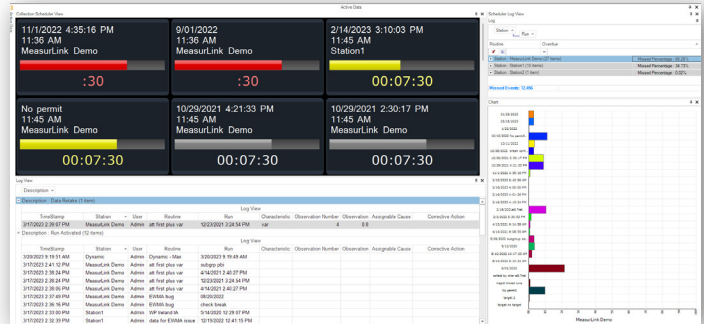
Transform data from measurement sources before storing and displaying results. This function can convert units and shift decimal points to make data collection even easier.

Dynamic Run Selection



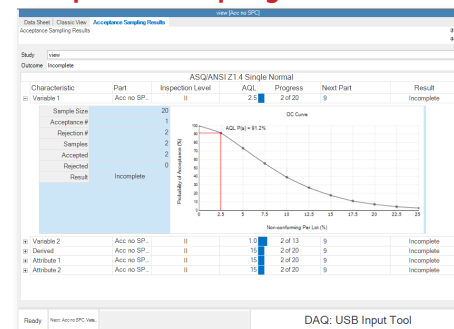
This supports functionality for enhanced reporting. It gives users the ability to report on multiple runs across separate stations, parts, and routines based on filter criteria. Output all runs matching filter criteria to a single report, or an individual report for each run.

Missed Inspection View and Metrics



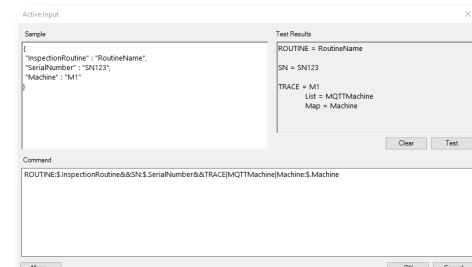
View metrics based on run, routine, station, and time for missed data collections using Process Manager.

Acceptance Sampling



The MeasurLink® Acceptance Sampling feature calculates the correct number of samples to take and will reject or accept lots based on C=0 or ANSI Z1.4 standards. Display OC Curves for risk evaluation. Export to Excel or PDF.

MQTT JSON Device



Supports machine-to-machine communication protocol for industrial automation. Similar to RS-232 devices, the measurement, traceability and serial number can be collected.

Additional New Functions and Features

- Support for Box Plot Analysis
- Report electronic signature history
- Identify characteristic criticality
- Support for sigma zone lines to XBarR and XBarS charts
- Enhanced Create Routine function to allow folder selection
- Record RS-232 polling communication to log file
- New Gage R&R studies can be created using the properties of a previous study. This allows for a series of repeating studies on the same gage to be conducted with very little setup required.
- Improved loading performance
- Added filter descriptions to chart printouts

System Information

MeasurLink® is a modular data management software system that enables collecting data from a wide range of Mitutoyo measuring tools and systems including Calipers, Indicators, Sensors, Vision and Coordinate Measuring Machines.

- **MeasurLink® Real-Time Standard** allows data collection from each tool and instrument while allowing real-time display of statistical processing data such as control charts, histograms and process capability indices.
- **MeasurLink® Real-Time Professional** additionally supports filter, Import Templates and DDE DAQ Sources.
- **MeasurLink® Real-Time Professional 3D** additionally supports view of the workpiece using 3D CAD data. (HOOPS).
- **MeasurLink® Process Analyzer** A powerful supervisory tool for viewing, analyzing and reporting on all data collected at any Real-Time station on the network. Additional charting options and management friendly reports provide insight on the manufacturing process.
- **MeasurLink® Process Manager** enables centralized monitoring of information from all MeasurLink® data collection terminals networked together on the shop floor.
- **MeasurLink® Report Scheduler** automatically outputs reports created by Real-Time or Process Analyzer on a user defined schedule.
- **MeasurLink® Gage Management** plans and implements a complete calibration schedule and incorporates a powerful retrieval function in addition to recording and managing the operational state of gages.
- **MeasurLink® Gage R&R** is an evaluation and analysis software compliant with MSA required in ISO/TS 16949.
- **Workgroups and Site Licenses:** The MeasurLink® suite is best acquired as a Workgroup or Site License. The package can be any combination of Real-Time, Process Analyzer, Process Manager, Report Scheduler, Gage R&R and/or Gage Management modules. All of the stations in the installation store their data in a SQL Database located on the user's network.
- **Floating License Authorization:** Users who want to use MeasurLink® in a terminal server environment or want to have a number of concurrent users should consider the Floating License upgrade option. This authorizes licenses in packs of 5, 10, 15 and 30. Thin-Client hardware or traditional PCs can utilize this option.
- **New TQM License!** A single floating license with every module that can be used on any computer. Perfect for power users or anyone who wants to get the most improvement out of their manufacturing process.

Item	Part Number		
	New Purchase	Version Upgrade	Floating Authorization
MeasurLink® V10 Real-Time Standard Edition	64AAB836	64AAB836-U	N/A
MeasurLink® V10 Real-Time Professional Edition	64AAB837	64AAB837-U	N/A
MeasurLink® V10 Real-Time Professional 3D Edition	64AAB838	64AAB838-U	N/A
MeasurLink® V10 Single Floating License	64AAB855F	N/A	N/A
MeasurLink® V10 Workgroup 5 License Package	64AAB847	64AAB847-U	64AAB847F
MeasurLink® V10 Workgroup 10 License Package	64AAB846	64AAB846-U	64AAB846F
MeasurLink® V10 Workgroup 15 License Package	64AAB844	64AAB844-U	64AAB844F
MeasurLink® V10 Site License 30 License Package	64AAB843	64AAB843-U	64AAB843F
MeasurLink® V10 Academic 20 License Package	64AAB848	64AAB848-U	64AAB854F

Database Management System (DBMS) Requirements

MeasurLink® 10 ships with Microsoft® SQL Server Express Edition 2019. This edition can be used to support a standalone or multi-machine workgroup installation. We recommend 5 licenses or fewer when using SQL Server Express).

MeasurLink® supports the following Microsoft® SQL Server versions:

- Microsoft® SQL Server 2022 Standard Edition
- Microsoft® SQL Server 2022 Enterprise Edition
- Microsoft® SQL Server 2019 Standard Edition
- Microsoft® SQL Server 2019 Enterprise Edition
- Microsoft® SQL Server 2017 Standard Edition
- Microsoft® SQL Server 2017 Enterprise Edition
- Microsoft® SQL Server 2016 Standard Edition
- Microsoft® SQL Server 2016 Enterprise Edition

Operating System Requirements

All MeasurLink® 10 products are supported on the following Microsoft® Windows Operating System versions:

- All Windows® 10 versions (not including Mobile and IoT versions)
- All Windows® 11 versions (not including IoT versions)
- 64-bit operating systems required

Hardware Requirements

These requirements are the minimum for the Windows® OS and may not provide optimum performance. In general, the more powerful the PC, the faster the response times!

MeasurLink®
An Integrated Solution for Quality Data Management



Whatever your challenges are, Mitutoyo supports you from start to finish.

Mitutoyo is not only a manufacturer of top-quality measuring products but one that also offers qualified support for the lifetime of the equipment, backed by comprehensive services that ensure your staff can make the very best use of the investment.

Apart from the basics of calibration and repair, Mitutoyo offers product and metrology training, as well as IT support for the sophisticated software used in modern measuring technology. We can also design, build, test and deliver measuring solutions and even, if deemed cost-effective, take your critical measurement challenges in-house on a sub-contract basis.

My.Mitutoyo

Mitutoyo End User Portal

Search for products, request a product quote, take online metrology courses, and much more.

My.Mitutoyo.com puts everything Mitutoyo directly in front of you.

Mitutoyo

Note: All information regarding our products, and in particular the illustrations, drawings, dimensional and performance data contained in this printed matter as well as other technical data are to be regarded as approximate average values. We therefore reserve the right to make changes to the corresponding designs. The stated standards, similar technical regulations, descriptions and illustrations of the products were valid at the time of printing. In addition, the latest applicable version of our General Trading Conditions will apply. Only quotations submitted by ourselves may be regarded as definitive. Specifications are subject to change without notice.

Mitutoyo products are subject to US Export Administration Regulations (EAR). Re-export or relocation of our products may require prior approval by an appropriate governing authority.

Trademarks and Registrations

Designations used by companies to distinguish their products are often claimed as trademarks. In all instances where Mitutoyo America Corporation is aware of a claim, the product names appear in initial capital or all capital letters. The appropriate companies should be contacted for more complete trademark and registration information.