

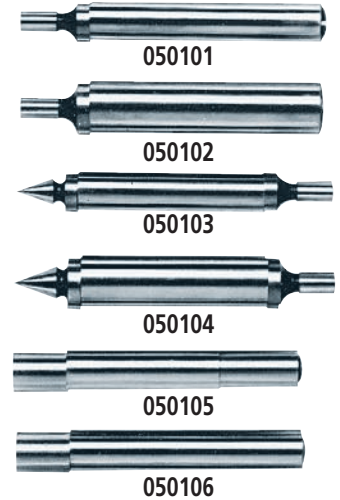
# Edge & Center Finders

## FEATURES

The Edge and Center Finders are hardened and ground on all surfaces.

## SPECIFICATIONS

Order No.	Shank (DIA)	Tip (DIA)	Remarks
050101	3/8" (.375")	.20"	Edge Type
050102	1/2" (.50")	.20"	Edge Type
050103	3/8" (.375")	.20"	Center Type
050104	1/2" (.50")	.20"	Center Type
050105	.375"/10mm	10mm	Edge Type
050106	10mm	10mm	Edge Type
050109	1/2" (.50")	.50"	Edge Type
050110	1/2" (.50")	.20", .50"	Double Edge Finder



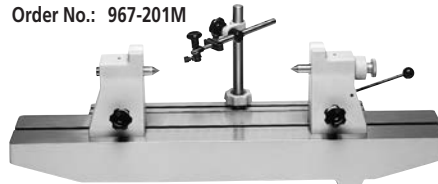
# Bench Center

## SERIES 967

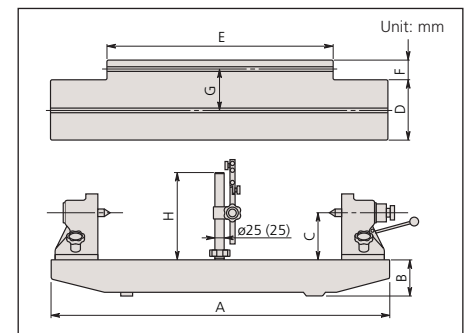
### FEATURES

- Used with a dial test indicator (optional), the Bench Center provides precision measurement of concentricity verification on cylindrical workpieces.
- With an indicator clamp. (Holding stem diameter: 9.53mm / .375")

Order No.: 967-201M



### DIMENSIONS



Order No.	A	B	C	D	E	F	G	H
967-203-10	310	40	50	70	178	41	60	134.5
967-201-10	500	45	75	80	370	36	60	194.5
967-204-10	700	80	100	140	500	65	110	194.5
967-202-10	900	100	125	160	600	50	104	230

### SPECIFICATIONS

Order No.	Center-to-Center	Workpiece Capacity Diameter	Max. Weight Hold	Parallelism of Centers	Flatness of Surface	Attachment Diameter	Mass (kg)
967-203-10	5.9" / 150mm	3.8"	17.5 lbs. (8kg)	.0002"	.0004"	Ø3/8"	7
967-201-10	11.8" / 300mm	5.8"	35 lbs. (16kg)	.0002"	.0006"	Ø3/8"	13
967-204-10	17.7" / 450mm	7.8"	44 lbs. (20kg)	.0002"	.0007"	Ø3/8"	60
967-202-10	23.6" / 600mm	9.8"	66 lbs. (30kg)	.00024"	.0008"	Ø3/8"	70

### Technical Data

Maximum workpiece dia.: 300mm  
 Maximum workpiece height: 150mm  
 Mass: 13kg

### Optional Accessories:

**56AAJ988** Special attachment for mounting **967-201-10** in vertical position.

**56AAJ987** Special attachment for mounting **967-203-10** in vertical position.