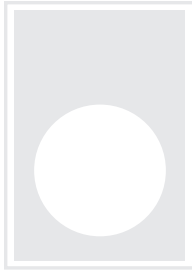
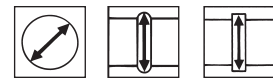


651 SERIES ELECTRONIC GROOVE GAGES



Measuring Accuracy

Gages with 0.4" Travel:
Linear Accuracy $\pm 0.0004"$
Repeatability $\pm 0.0002"$

Gages with 0.8" Travel:
Linear Accuracy $\pm 0.001"$
Repeatability $\pm 0.0005"$

Notable Features

- Fast, accurate, repeatable.
- Lightweight
- SPC output for USB or Mitutoyo devices. Cables offered separately.
- Absolute and relative modes with Min, Max and Hold programs.
- Tolerance limit markers with green/red LED for visual operator judgment
- Internal memory that holds a maximum of 80 measured values.
- Programmable auto shut off for battery savings.
- IP 67. Gages are shop rugged.
- Analog segment (fan) display.
- Keypad lock.
- Wireless data option. Contact us with your requirement.

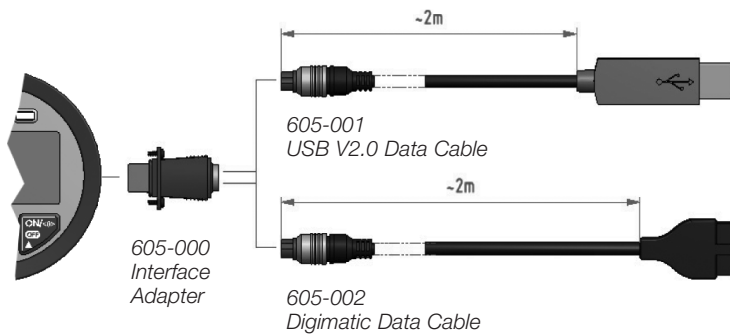
Special customized arms, ball sizes and/or ball material are also available. Dyer is dedicated to solving your special measuring applications. Contact Dyer Applications Engineering with your specific gage requirement.



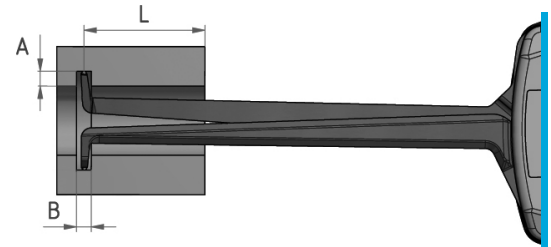
651-105

Standard Range Models and Specifications

Application Range	Measuring Depth (L)	Groove Depth (A)	Groove Width (B)	Graduation	Contact Style	Order Number
0.10"-0.49" 2.5-12.5 mm	1.37" 35 mm	0.035" 0.9 mm	0.025" 0.6 mm	0.0002" 0.005 mm	Radius Chisel 0.004" (0.1 mm)	651-100
0.20"-0.59" 5-15 mm	1.37" 35 mm	0.098" 2.5 mm	0.032" 0.8 mm	0.0002" 0.005 mm	0.024"(0.6 mm) carbide ball	651-101
0.39"-1.18" 10-30 mm	3.3" 85 mm	0.200" 5 mm	0.059" 1.5 mm	0.0005" 0.01 mm	0.039"(1 mm) carbide ball	651-102
0.79"-1.58" 20-40 mm	3.3" 85 mm	0.275" 7 mm	0.059" 1.5 mm	0.0005" 0.01 mm	0.039"(1 mm) carbide ball	651-103
1.18"-1.97" 30-50 mm	3.3" 85 mm	0.275" 7 mm	0.059" 1.5 mm	0.0005" 0.01 mm	0.039"(1 mm) carbide ball	651-104
1.58"-2.36" 40-60 mm	3.3" 85 mm	0.472" 12 mm	0.059" 1.5 mm	0.0005" 0.01 mm	0.039"(1 mm) carbide ball	651-105
1.97"-2.75" 50-70 mm	3.3" 85 mm	0.472" 12 mm	0.059" 1.5 mm	0.0005" 0.01 mm	0.039"(1 mm) carbide ball	651-106
2.36"-3.15" 60-80 mm	3.3" 85 mm	0.472" 12 mm	0.059" 1.5 mm	0.0005" 0.01 mm	0.039"(1 mm) carbide ball	651-107
2.75"-3.54" 70-90 mm	3.3" 85 mm	0.472" 12 mm	0.059" 1.5 mm	0.0005" 0.01 mm	0.039"(1 mm) carbide ball	651-108
3.15"-3.94" 80-100 mm	3.3" 85 mm	0.472" 12 mm	0.059" 1.5 mm	0.0005" 0.01 mm	0.039"(1 mm) carbide ball	651-109



SPC Cables



651-101

Willrich Precision
Ph 866-945-5742
email: sales@willrich.com