

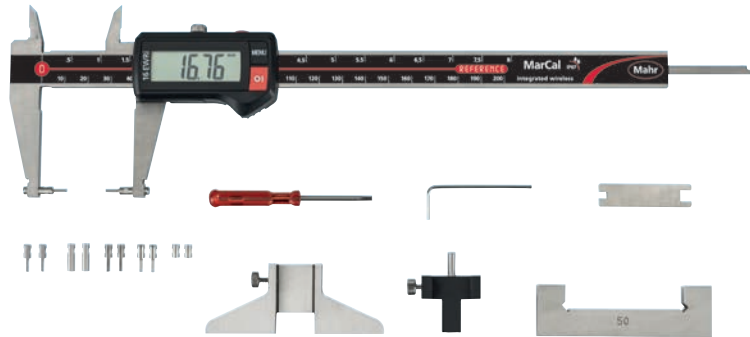
Functions

- AUTO-ON / OFF
- ON/OFF
- DATA (data transmission via connection cable)
- HOLD (storage of measured values)
- PRESET (for entering a numerical value)
- RESET (set display to zero)
- mm/in
- LOCK function (key lock)
- High contrast digital display
- Locking thumbscrew
- Lapped guideway
- Measuring blade for inside measurements
- Slide and beam made of hardened stainless steel
- Step measuring function
- Immediate measurements due to the Reference System
- Raised guideways for protection of the scale
- Strong resistance against dust, coolants and lubricants
- Dirt wipers integrated in the slide
- MarCom Professional Software free download:

www.mahr.com/marcom

(only for Mahr data cables and wireless systems with USB and RS232 interface)

- **Digit Height:** 11 mm
- **Data Interface:** Integrated Wireless
- **Energy Supply:** Battery life approximately 3 years (approximately ½ year in wireless mode)
- **IP Protection Category:** IP 67
- **Package Contains:** Battery, Instruction Manual, Case, Setting Gage for Inside Measurement 16 Eel, Measuring Force Device 16 Ec, Depth Measuring Bridge 16 Em, Anvils for Outside Measurement 16 Eea 1-3, Anvils for Inside Measurement 16 Eei 1-3



Application:

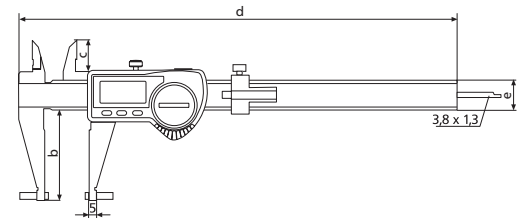
- Used as standard caliper (four measuring directions), with standard accessories for measuring recesses, grooves, etc.
- Used with special accessories for measuring threads, bores and gears



Technical Data

Order No.	Product Type	Measuring Range	Resolution	Error Limit	Standard	Depth Rod	Including Accessories
4118907	16 EWRI-V	0 - 200 mm / 0 - 8 in	0,01 mm / 0.0005 in	0,03 mm	DIN 862	Rectangular	•

Order No.	b	c	d	e
4118907	48 mm	16,5 mm	285 mm	16 mm

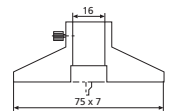


Accessories

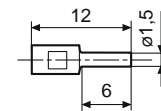
Order No	Product Description	Product Type
4102020	Depth bridge (75 mm x 7 mm)	16 Em
4102220	Receiver including MarCom Standard Software	i-Stick
4102520	Battery 3 V, CR 2032	
4118810	Anvil for outside measurement (3,5 x 12 mm)	16 Eea 1
4118811	Anvil for outside measurement (1,5 x 6 mm)	16 Eea 2
4118812	Anvil for outside measurement (3,5 x 6 mm)	16 Eea 3
4118813	Anvil for inside measurement (3,5 x 6 mm)	16 Eei 1
4118814	Anvil for inside measurement (1,5 x 6 mm)	16 Eei 2
4118815	Anvil for inside measurement (3,5 x 6 mm)	16 Eei 3
4118816	Anvil for inside measurement (4 x 2,5 mm)	16 Eei 4
4118817	Setting gage for inside measurement (50 mm)	16 Eel
4118818	Measuring force device	16 Ec
4118819	Mounting attachment for thread anvils 844 TG/844Tr and ball anvils 844 Tk	16 Eab
4879602	Screws M2x8	



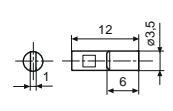
i-Stick



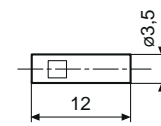
16 Em



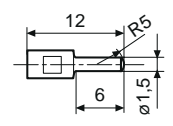
16 Eea 2



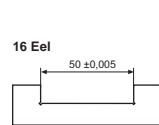
16 Eea 3



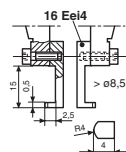
16 Eei 1



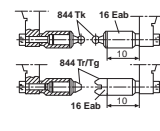
16 Eei 2



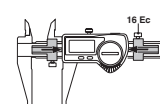
16 Eel



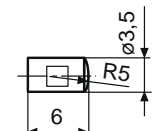
16 Eei 4



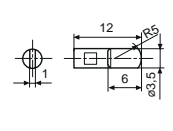
16 Eab



16 Ec



16 Eei 1



16 Eei 3