

DYS GROOVE GAGE

sales@willrich.com

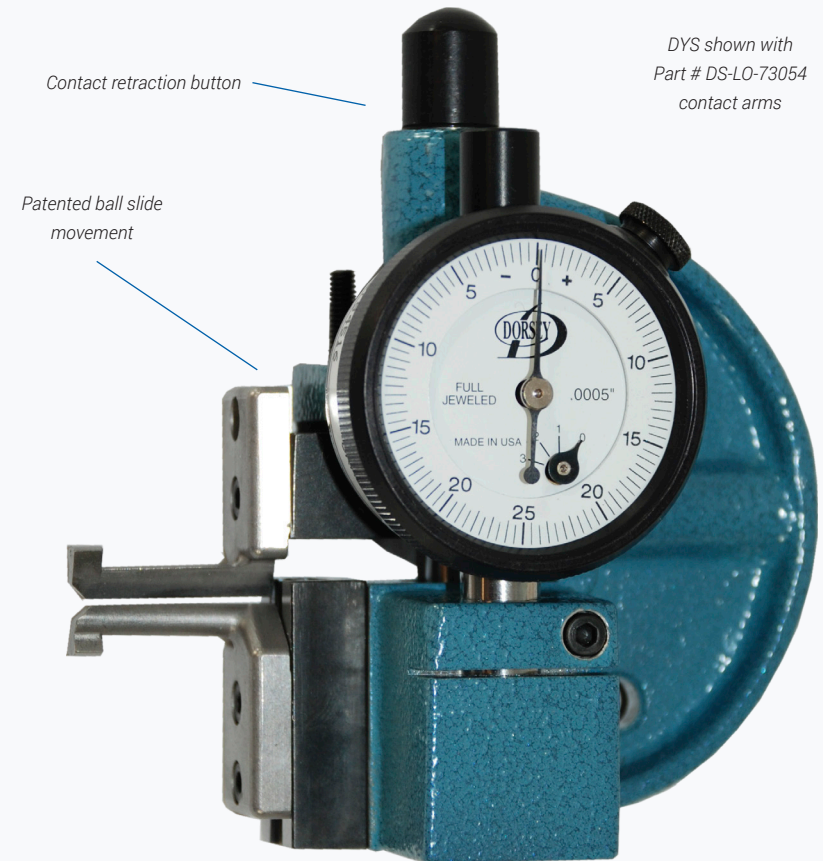
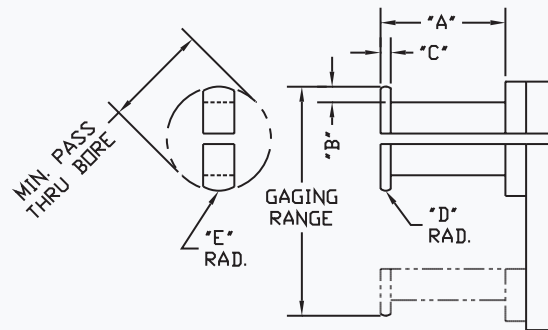
Dorsey's Dynamike Model DYS groove gage combines a lightweight, compact, rigid cast frame and a patented ball bushing slide with a series of interchangeable gaging arms to suit virtually any application.

FEATURES:

- ✓ .25" (6mm) of gaging travel / retraction.
- ✓ .25" to .75" (6mm-19mm) diameter range.
- ✓ 1.25" (32mm) long precision ground adjustment rail.
- ✓ Can accommodate dial or digital indicator.
- ✓ Retraction pulls away from indicator.



Gage shown is DYS with special metric indicator, part# 2305 arms, and part # 18967 bench stand



DYS shown with Part # DS-LO-73054 contact arms

Shown actual size

The DYS Groove Gage is supplied per model # below with DYS Groove Gage body, model # 1DM125-05 dial indicator, .0005" graduation, and the appropriate contact arm set for the range noted below:

PART #	RANGE	MIN / BORE	TYPE	"A" Dim.	"B" Dim.	"C" Dim.	CONTACT ARM #
DYS-250-2	.250 - .500	.187	2 Point	.500	.030	.030	# 2305-2
DYS-250-3	.250 - .500	.187	3 Point	.500	.030	.030	# 2305-3
DYS-500-2	.500 - .750	.350	2 Point	1.000	.075	.060	# 2306-2
DYS-500-3	.500 - .750	.350	3 Point	1.000	.075	.060	#2306-3
DYS-Blank*	To Suit	.370	2 Point	.750	.097	.125	# DS-LO-73054*

PART #	DESCRIPTION
DYS-FRAME	DYS Groove Gage body only, less gaging arms and indicator
18967	For the Bench Stand used with the DYS gages
2335	Clamp nut used with part # 2305 & #2306 contact arms
DS-LO-2335	Clamp nut used with part # DS-LO-73054

*Note #1: Blank contacts can be used as supplied or modified to suit a specific application.

*Note #2: For pricing on special gaging arms to suit a specific application, submit the part print with your quotation. Arms can be ordered separately.