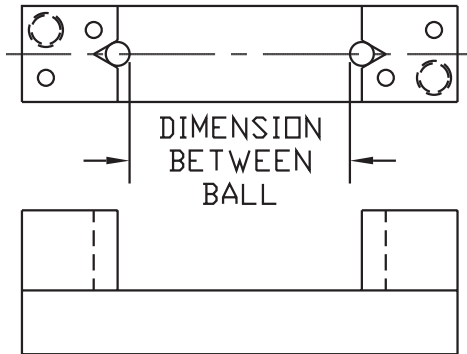


# INTERNAL PITCH DIAMETER BORE GAGE

The Internal Pitch Diameter gage is ideally suited to check the internal pitch diameter of gears and splines. It can also be used to check any internal dimension where centralization is not necessary. Production models are available for a specific "best wire size" dimension. Models over 1.25" are supplied with interchangeable screw-in contacts. Special Fixed "V" masters are available to suit the application.

## FEATURES:

- ✓ Carbide ball contacts (best wire size).
- ✓ Interchangeable screw in contacts.
- ✓ Can be used to check PD or major root diameter of gears and splines.
- ✓ Optional fitted storage case available.



| INTERCHANGEABLE CARBIDE CONTACTS |            |
|----------------------------------|------------|
| DIAMETER                         | PART #     |
| .1250"                           | 4082-125-B |
| .1875"                           | 4082-187-B |
| .2500"                           | 4082-250-B |
| SPECIALS QUOTED PER APPLICATION  |            |

"V" Style pitch diameter setmaster, built per application



| PART #      | CONTACT TYPE    | GAGING DEPTH (INCHES) | BOTTOM OF HEAD TO CENTERLINE OF CONTACT | FRAME STYLE | BETWEEN BALL/ ROLL DIMENSION | STORAGE BOX PART # |
|-------------|-----------------|-----------------------|---|-------------|------------------------------|--------------------|
| PD-500      | FIXED           | 3"                    | .188"                                   | DBL-499     | .50" - 1.25"                 | 9000               |
| DSPD-1000-A | INTERCHANGEABLE | 5"                    | .224"                                   | DS # 3      | 1.25" - 3.00"                | DX2-89953          |
| PD-1000-A   | INTERCHANGEABLE | 4"                    | .188"                                   | DBL-998     | 1.25" - 3.00"                | 9000               |
| DSPD-3000-A | INTERCHANGEABLE | 6"                    | .224"                                   | DS # 5      | 3.00" - 6.00"                | DX2-89955          |
| PD-3000-A   | INTERCHANGEABLE | 5"                    | .250"                                   | DBL-300     | 3.00" - 6.00"                | 9005               |
| DSPD-6000-A | INTERCHANGEABLE | 6"                    | .312"                                   | DS # 6      | 6.00" - 13.00"               | DX2-89956          |

DS Series bore gages are shipped in disposable shipping containers. To order a fitted wooden storage box see the chart.

