

# TomoScope® S

X-Ray Computed Tomography Machine



## Fast Measurements

Measure faster with OnTheFly and high resolution via transmission tube.

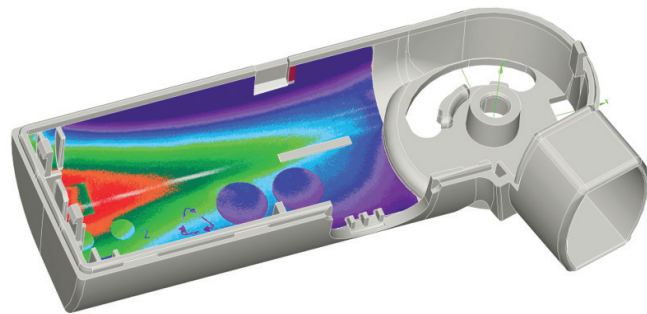
## High Resolution

Extremely small focal spot size throughout the entire power range.

## Low Uncertainty

Local subvoxeling for reduction of the probing error (patent).

## Specifications



### X-ray Source

Tube Type	Open
Target Options	Transmission Target (TT) Reflection Target (RT)
Max. Voltage TT	240kV (190kV)
Max. Voltage RT	150kV (130kV)

### System

Width	83.5 in [2122 mm]
Depth	44.8 in [1137 mm]
Height	67.7 in [1720 mm]
Weight	8820 lbs [4000 kg]
Voltage	230 V (115 V) ±10%
Frequency	50 - 60 Hz
Power	2000 VA
Air Pressure	5.5 - 10 bar
Air Consumption	3000 NI/h
Humidity	40% - 70%
Air Contamination	0.05 mg/m <sup>3</sup>
Temperature	50 - 95 °F [10 - 35 °C]
Operating System	Microsoft Windows

### X-Ray Detector

Surface Area	5.7 x 4.5 in <sup>2</sup> [145 x 115 mm <sup>2</sup> ] 11.5 x 9.1 in <sup>2</sup> [290 x 230 mm <sup>2</sup> ]
Pixel Count	1024 x 1024 3888 x 3072

### Inspection

Max. Sample Weight	66 lbs [30 kg]
Max. Diameter "in the image"	Ø = 4.6 in [118 mm] Ø = 8.0 in [204 mm]
Max. Length "in the image"	L = 4.2 in [106 mm] L = 8.4 in [213 mm]
Max. Diameter Raster	Ø = 7.7 in [196 mm] Ø = 8.0 in [204 mm]
Max. Length Raster	L = 11.7 in [297 mm] L = 15.7 in [398 mm]
Max. Distance Source to Detector	35.5 in [850mm]

### Maximum Permissible Error [MPE]

Standard Conditions	P: 4.5 µm
	E: (4.5 + L/175) µm
	SD <sup>3</sup> : (3.5 + L/100) µm

L = measuring length in mm comparable to ISO 10360 and VDI/VDE 2617

Specifications vary depending on machine configurations, operating conditions, and calibration

**Werth Metrology Inc.**  
Connecticut

Phone: +1 (860) 399-2445  
Email: [contactus@werthinc.com](mailto:contactus@werthinc.com)

**Werth Metrology Inc.**  
California

Phone: +1 (408) 549-1748  
Email: [contactus@werthinc.com](mailto:contactus@werthinc.com)

**Werth Messtechnik**  
GmbH

Phone: +49 6 41 79 38-0  
Email: [mail@werth.de](mailto:mail@werth.de)



More offices and resellers at [www.werth.de](http://www.werth.de)



[www.werthinc.com](http://www.werthinc.com) | [contactus@werthinc.com](mailto:contactus@werthinc.com)  
8 Custom Drive Old Saybrook, CT 06416

Subject to change without notice - 11/2021