

866-945-5742
sales@willrich.com

Packages for U-WAVE Wireless and U-WAVE Bluetooth®

MeasurLink® ENABLED
Data Management Software by Mitutoyo



Send data wirelessly from nearly any device and to any software



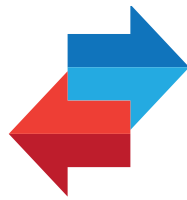
SMALL TOOL INSTRUMENTS
AND DATA MANAGEMENT

U-WAVE (2 OPTIONS)

U-Wave Wireless

Mitutoyo original communication
(based on IEEE 802.15.4 protocol)

400,000 data transmission per battery
20 m range
Up to 100 transmitters/receiver



U-Wave Bluetooth

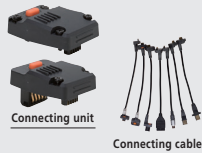
Bluetooth 4.2
communication protocol

50,000 to 200,000 data transmissions per battery
16 m range
Up to 7 connections/PC

Connection

■ Connecting unit/connecting cable

- A compact connecting unit or cable connects the U-WAVE-TM/TC/T transmitter to the Digimatic gage.



Transmitters

■ U-WAVE-TM/TC/T

- Transmits the measurement data displayed on the gage to U-WAVE-R.

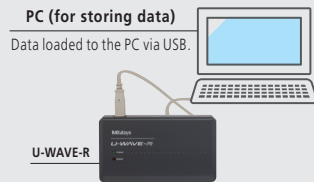


20 m range

Receiver

■ U-WAVE-R

- Receives measurement data and transmits to the PC via USB.
- Since USB bus power system is used, a battery or adapter is not required.
- The supplied software U-WAVEPAK is required.
- Band ID Scan identifies the optimal frequency for data transmission

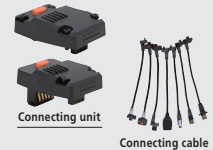


Connect up to 100 transmitters

Connection

■ Connecting unit/connecting cable

- A compact connecting unit or cable connects the U-WAVE-TMB/TCB transmitter to the Digimatic gage.



Transmitters

■ U-WAVE-TMB/TCB

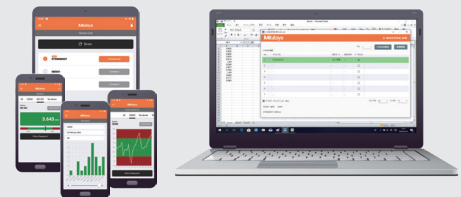
- Transmits the measurement data displayed on the gage to a Bluetooth enabled device.



16 m range

Receiver

- Bluetooth enabled PC, tablet or mobile device receives data.
- Free, optional software available for Windows and mobile devices



Connect up to 3 transmitters

Connect up to 7 transmitters

■ Function comparison table

	U-Wave Wireless	U-Wave Bluetooth
Communication protocol	Mitutoyo Original <based on IEEE802.15.4>	Bluetooth® 4.2
Communication distance	Approx. 20 m (line of sight)	Approx. 16 m (line of sight)
Communication frequency	2.405 to 2.475 GHz	2.402 to 2.480 GHz
Selectable frequency	Yes	Frequency hopping spread spectrum
Selectable control key	Yes (enter, tab, left, right, up, down)	No (simulates enter key only)
Battery life	Approx. 400,000 transmissions	Approx. 50,000 to 200,000 transmissions
Operating system	Windows	Windows, iOS, Android
U-Wave-R compatible	Required (P/N: 02AZD810D)	No
Maximum number of connections	100	7 (PC) 3 (mobile devices)
Operation modes	Keyboard emulator or VCP	
Measurement modes	Button or event driven (data request from PC or on timed interval)	
Long button press	Cancel data command	
LED	Data confirmation and low battery warning	
Data export	Microsoft® Excel® or SPC software applications	
Durability	Dust/waterproof and shop-hardened with proprietary fiber-reinforced plastic housing	

✓ Bluetooth® type models have the mark.



For micrometers

For callipers

MeasurLink® ENABLED

Data Management Software by Mitutoyo

U-WAVE Wireless Packages

“U-WAVE”, the measurement data wireless communication system, collects data in the inspection process swiftly and accurately, and increases a company’s competitiveness based on detailed data analysis. In addition, together with MeasurLink, “IoT of Quality Control envisioned by Mitutoyo” can be achieved.

- U-Wave Wireless packages require U-Wave R Part #02AZD810D, sold separately.
- Gages sold separately.

MeasurLink[®] ENABLED
Data Management Software by Mitutoyo

Order Number	Description	Components
264-622-TYPF	U-Wave Wireless Package for F-Type Indicators	
02AZF670	U-WAVE-TM/TMB BRACKET FOR INDICATORS	
264-622	U-WAVE-TM/IP67 TYPE	
02AZD790F	U-WAVE CONNECTING CABLE F	
264-622-TYPF-FSW	U-Wave Wireless Package w/ Footswitch for F-Type Indicators	
02AZF670	U-WAVE-TM/TMB BRACKET FOR INDICATORS	
264-622	U-WAVE-TM/IP67 TYPE	
02AZE140F	CONNECTION CABLE TYPE F FOR FOOTSWITCH	
937179T	FOOT SWITCH	
264-622-IP-M	U-Wave Wireless Package for Micrometers	
264-622	U-WAVE-TM/IP67 TYPE	
02AZF310	CONNECTION UNIT WATERPROOF TYPE	
264-620-IP-S	U-Wave Wireless Package for Standard Calipers	
264-620	U-WAVE-TC/IP67 TYPE	
02AZF300	CONNECTION UNIT STANDARD TYPE	
264-620-IP	U-Wave Wireless Package for Coolant-proof Calipers	
264-620	U-WAVE-TC/IP67 TYPE	
02AZF310	CONNECTION UNIT WATERPROOF TYPE	
02AZD730G-TYPD	U-Wave Wireless Package for SJ Units, QMH, and LSM	
02AZD730G	U-WAVE-T/IP67 TYPE	
02AZD790D	U-WAVE CONNECTING CABLE D	
02AZE200	U-WAVE-T INSTALLATION KIT	
02AZD730G-HG	U-Wave Wireless Package for 192 and 570 Series Height Gages	
02AZD730G	U-WAVE-T/IP67 TYPE	
02AZD790F	U-WAVE CONNECTING CABLE F	
02AZE200	U-WAVE-T INSTALLATION KIT	

U-WAVE Bluetooth® Packages

U-WAVE-TMB/ TCB are transmitter models using Bluetooth® wireless technology. No receiver is required, and one PC can connect up to seven units of U-Wave Bluetooth®. U-Wave Bluetooth packages require a BLE4.2 enabled device.

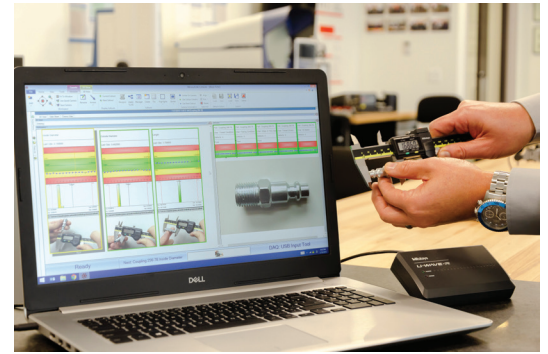
– Gages sold separately.

MeasurLink® ENABLED
Data Management Software by Mitutoyo

Order Number	Description	Components
264-626-TYPF	U-Wave Bluetooth Package for F-Type Indicators	 02AZF670  02AZD790F  264-626
02AZF670	U-WAVE-TM/TMB BRACKET FOR INDICATORS	
264-626	U-WAVE-TMB/IP67 TYPE BLUETOOTH	
02AZD790F	U-WAVE CONNECTING CABLE F	
264-626-TYPF-FSW	U-Wave Bluetooth Package w/Footswitch for F-Type Indicators	 02AZE140F  937179T
02AZF670	U-WAVE-TM/TMB BRACKET FOR INDICATORS	
264-626	U-WAVE-TMB/IP67 TYPE BLUETOOTH	
02AZE140F	CONNECTION CABLE TYPE F FOR FOOTSWITCH	
937179T	FOOT SWITCH	
264-626-MIC	U-Wave Bluetooth Package for Micrometers	 02AZF310  264-626
264-626	U-WAVE-TMB/IP67 TYPE BLUETOOTH	
02AZF310	CONNECTION UNIT WATERPROOF TYPE	
264-624-CALIPER	U-Wave Bluetooth Package for Standard Calipers	 02AZF300  264-624
264-624	U-WAVE-TCB/IP67 TYPE BLUETOOTH	
02AZF300	CONNECTION UNIT STANDARD TYPE	
264-624-CALIPER67	U-Wave Bluetooth Package for Coolant-proof Calipers	 02AZF310  264-624
264-624	U-WAVE-TCB/IP67 TYPE BLUETOOTH	
02AZF310	CONNECTION UNIT WATERPROOF TYPE	
264-624-TYPD	U-Wave Bluetooth Package for SJ Units, QMH, and LSM	 02AZD790D  264-624
264-624	U-WAVE-TCB/IP67 TYPE BLUETOOTH	
02AZD790D	U-WAVE CONNECTING CABLE D	
264-624-HG	U-Wave Bluetooth Package for 192 and 570 Series Height Gages	 02AZD790F  264-624
264-624	U-WAVE-TCB/IP67 TYPE BLUETOOTH	
02AZD790F	U-WAVE CONNECTING CABLE F	

Add MeasurLink® for a complete data management solution

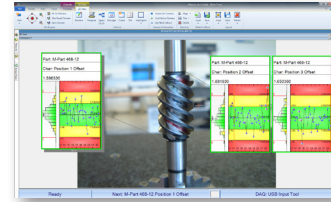
- ▶ MeasurLink® is a modular data management software system that enables collecting data from a wide range of Mitutoyo measuring tools and systems including Coordinate Measuring Machines.
- ▶ MeasurLink® supports anything from small-scale, standalone systems to large-scale systems utilizing a PC network environment. Expansion from a standalone installation to a networked system can be performed with ease, allowing a gradual upgrade from a single-test operation in one section to a full-scale operation.



■ Use MeasurLink® to:

- Reduce costs associated with inspection, rework and scrap
- Ensure part quality and consistency
- Increase data visibility and accessibility
- Increase ease of use for Quality and Manufacturing
- Reduce manufacturing defects using real-time SPC
- Retain data in a relational database

Whether collecting, monitoring, analyzing, or storing data in a single application or plant-wide, **MeasurLink® is a complete Data Management solution.**



Digital Gages Incompatible with Packages

Transmitter models TM, TMB, TC, and TCB packages are not available for all digital gages. See table below for digital gages incompatible with U-Wave packages. For wireless or wired data output for the gages below, please select the individual applicable components from the catalog or contact your Mitutoyo Representative.

	Model	Part Numbers
Micrometers	Adjustable Force Mic	227 Series
	MDH	293-100/293-130
	Digimatic Micrometers with interchangeable standards 12-20" (300 to 508mm)	293 Series 12-20" (300 to 508 mm)
	MDQ	All Quickmikes
	Digimatic Micrometers with interchangeable anvils above 12" (300 mm)	340 series above 12" (300 mm)
	Disk Micrometers Quickmike Type	369-411/412/421/422
Calipers	Blade Micrometers Quickmike Type	422-411/412/421/422
	ABSOLUTE Digimatic and Coolant-Proof Calipers above 12" (300 mm)	500 Series above 12" (300 mm)
	Super Caliper -- Solar Powered	500-784
	Nib style caliper	551-224-10/226-10/227-10
	Carbon Fiber Calipers	552 Series
	Back jaw centerline caliper	573-116-10/117-10/118-10/119-10
	Snap Caliper	573-181-30/182-30/281-30/282-30
	Knife-edge caliper	573-742
Height Gages	Digimatic Depth Gage	571 series above 12"
	LH-600	518-351A-21/352A-21
Indicators	ID-N/B	543-570/571/575/576/580/581/585/586
	ID-U	575-121/122/123



Mitutoyo America Corporation

866-945-5742

sales@willrich.com

Note: All information regarding our products, and in particular the illustrations, drawings, dimensional and performance data contained in this printed matter as well as other technical data are to be regarded as approximate average values. We therefore reserve the right to make changes to the corresponding designs. The stated standards, similar technical regulations, descriptions and illustrations of the products were valid at the time of printing. In addition, the latest applicable version of our General Trading Conditions will apply. Only quotations submitted by ourselves may be regarded as definitive. Specifications are subject to change without notice.

Mitutoyo products are subject to US Export Administration Regulations (EAR). Re-export or relocation of our products may require prior approval by an appropriate governing authority.

Trademarks and Registrations

Designations used by companies to distinguish their products are often claimed as trademarks. In all instances where Mitutoyo America Corporation is aware of a claim, the product names appear in initial capital or all capital letters. The appropriate companies should be contacted for more complete trademark and registration information.

- Coordinate Measuring Machines
- Vision Measuring Systems
- Form Measurement
- Optical Measuring
- Sensor Systems
- Test Equipment and Seismometers
- Digital Scale and DRO Systems
- Small Tool Instruments and Data Management

© 2022 Mitutoyo America Corporation

1022 • WEB ONLY • Oct. 2022