

# WPI END-OF-YEAR PROMO

Mitutoyo Precision Tools & Instruments — In Stock Now.



Promo pricing valid through December 31, 2021

Willrich Precision Instrument Co. Inc.

Phone: 866-945-5742 | General Questions Email: [info@willrich.com](mailto:info@willrich.com) | [www.willrich.com](http://www.willrich.com)

# Purchase the world's first 5µinch /0.1µm resolution micrometer and receive a USB input tool and cable (\$252 value)

Using precision digital measuring tools together with a USB input tool improves both measurement results and data reliability. The latest version of Digimatic output, d2, allows output to a resolution of 1 millionths of an inch. The high-accuracy MDH with 5 millionths resolution can output in its entirety in both inch and metric. Resulting data can input directly to Excel®, MeasurLink® or other SPC programs.

To receive this special offer, use promo code: **PROMO026**.

> Range: 0-1", Resolution: .000005", Accuracy: +/- .000020

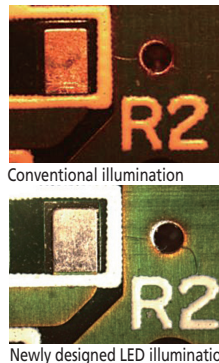
| Order No.         | Description   | List Price        |
|-------------------|---|-------------------|
| <b>PROMO026</b>   | Package: MDH Mic, SPC Cable, USB Input Tool               | <b>\$1,680.00</b> |
| <b>293-130-10</b> | MDH Micrometer with high accuracy, high resolution output | \$1,680.00        |
| <b>05CZA662</b>   | SPC CONNECTING CABLE (1M)                                 | \$83.80           |
| <b>264-016-10</b> | USB INPUT TOOL  | \$197.00          |

**Promo \$1,428.00**



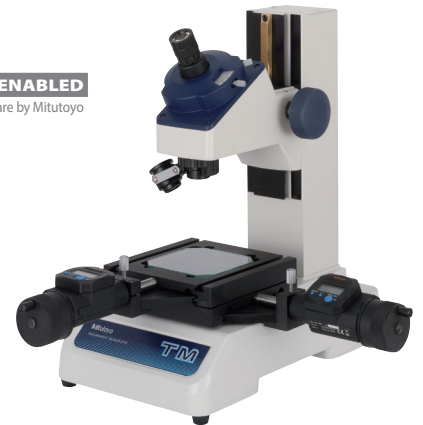
## TM Toolmakers' Microscopes

- > Adjustable illumination intensity.
- > Angle measurement is performed easily by turning the angle scale disc to align the cross-hair reticle with the workpiece image.
- > Includes standard accessories create an overall magnification of 30X. Magnifications can be changed from 20 - 200X by using optional objectives and/or eyepieces.
- > .000050" resolution digimatic micrometer heads included.



**MeasurLink ENABLED**  
Data Management Software by Mitutoyo

**TM-A505B  
176-820A**



| Model No.                 |                                | TM-A505B   | TM-A1005B  |
|---------------------------|--------------------------------|--|--|
| Order No.                 |                                | 176-820A   | 176-821A   |
| Eyepiece                  |                                | Standard accessory: 15X (field number: 13), Options: 10X, 20X                      |  |
| Objective lens            |                                | Standard accessory: 2X, Options: 5X, 10X   |  |
| Microscope head           | Maximum height of workpiece    | 4.53" / 115mm  | 4.21" / 107mm  |
|                           | Illumination unit              | Stepless brightness adjustment, White LED light source, with green filter          |  |
| Cross-travel stage        | Transmitted illumination       | Oblique single-source type, Stepless brightness adjustment, White LED light source |  |
|                           | Measuring range                | 2" x 2" / 50x50mm  | 4" x 2" / 100x50mm<br>(An optional 2"/50mm gage block is required to cover full range. A CERA block is recommended.) |
|                           | Usable area of the stage glass | 3.8" x 3.8" / 96x96mm  | 6" x 3.8" / 154x96mm   |
|                           | Maximum stage glass loading    | 11 lbs. / 5kg  |  |
| Linear measurement method |                                | Micrometer heads included  |  |
|                           | <b>List</b>                    | \$5,590.00   | \$7,290.00   |
|                           | <b>Promo</b>                   | <b>\$4,751.50</b>  | <b>\$6,196.50</b>  |

## Bench Top Laser Scan Micrometer LSM-9506

- > Integrated display and measuring unit in one unit.
- > Statistical calculation mode.
- > RS-232C output, I/O interface and SPC output interface are standard.
- > Accuracy: .0001"

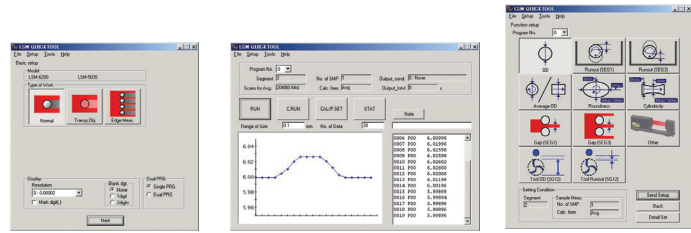
**MeasurLink** ENABLED  
Data Management Software by Mitutoyo



544-116-1A

| Order No.         | Range                      | Resolution                       | List       | Promo             |
|-------------------|----------------------------|----------------------------------|------------|-------------------|
| <b>544-116-1A</b> | .020" - 2.36"/0.5mm - 60mm | .000002" - .005"/0.00005 - 0.1mm | \$8,940.00 | <b>\$7,599.00</b> |

**QUICKTOOL\*** is a free, downloadable software that makes programming the laser quick and easy.  
\*For use with customer-supplied PC and optional RS-232C cable.



## High-Accuracy Non-Contact Measuring Systems

- > Excellent accuracy: down to +/- 12 μinches
- > High-speed scanning capable: 3,200 scans per second.
- > Various ranges available for selecting the best laser for your application.
- > Statistical calculation mode.
- > Memory function allows storage of up to 100 programs.
- > Standard RS-232C output and I/O interface. Optional Digimatic output.



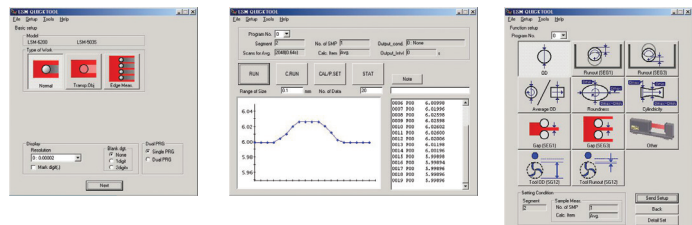
| Order No.       | Model    | Range Inch    | Range mm  | Repeatability | Accuracy | Scanning Rate   | List        | Promo              |
|-----------------|----------|---------------|-----------|---------------|----------|-----------------|-------------|--------------------|
| <b>64PKA117</b> | LSM-500S | .0002" - .08" | 0.005~2mm | ±0.03μm       | ±0.3μm   | 3,200 scans/sec | \$10,370.00 | <b>\$8,814.50</b>  |
| <b>64PKA118</b> | LSM-501S | .002" - .4"   | 0.05~10mm | ±0.04μm       | ±0.5μm†  | 3,200 scans/sec | \$9,330.00  | <b>\$7,930.50</b>  |
| <b>64PKA119</b> | LSM-503S | .012" - 1.18" | 0.3~30mm  | ±0.11μm       | ±1.0μm†  | 3,200 scans/sec | \$10,110.00 | <b>\$8,593.50</b>  |
| <b>64PKA120</b> | LSM-506S | .04" - 2.36"  | 1~60mm    | ±0.36μm       | ±3μm†    | 3,200 scans/sec | \$11,480.00 | <b>\$9,758.00</b>  |
| <b>64PKA121</b> | LSM-512S | .04" - 4.72"  | 1~120mm   | ±0.85μm       | ±6μm†    | 3,200 scans/sec | \$17,680.00 | <b>\$15,028.00</b> |
| <b>64PKA122</b> | LSM-516S | .04" - 6.30"  | 1~160mm   | ±1.4μm        | ±7μm†    | 3,200 scans/sec | \$28,480.00 | <b>\$24,208.00</b> |

† Accuracy over entire range. Higher accuracies are possible over smaller ranges.

**MeasurLink** ENABLED  
Data Management Software by Mitutoyo



**QUICKTOOL\*** is free downloadable software that makes programming the LSM-6200 quick and easy.  
\*For use with customer-supplied PC and optional RS-232C cable.



## High-Performance 2D Linear Height LH-600E

The Mitutoyo Linear Height LH-600E offers advanced performance for reliable and easy 2D measurement.

Measuring Range (stroke) 0–38" (24") / 0–972mm(600mm)

- > 0.1µm/1µinch resolution.
- > Excellent accuracy of  $(1.1+0.6L/600)\mu\text{m}$  with 0.4µm repeatability.
- > Perpendicularity of 5µm and straightness of 4µm are guaranteed.
- > Pneumatic full/semi-floating system.
- > One-key operation for running a semi-automatic measurement.
- > Measure hole diameters, gap distances, and even 2D measurements such as diagonal center-to-center distances.
- > The origin can be set at the top of a surface plate, centerline, top or bottom surfaces, or peak top or bottom points on radii.

**MeasurLink<sup>®</sup> ENABLED**  
Data Management Software by Mitutoyo



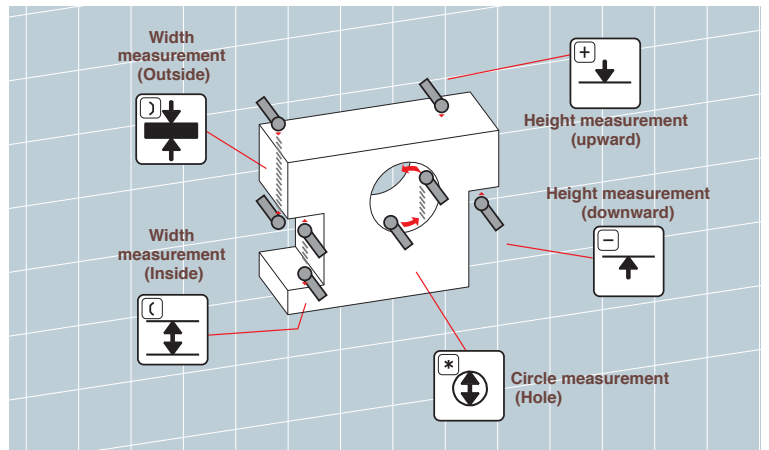
518-351A-21

518-352A-21

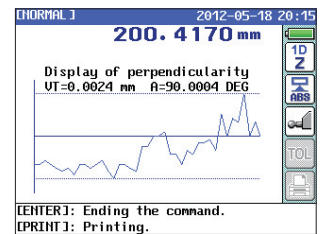
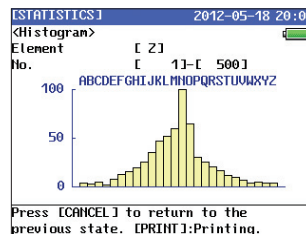
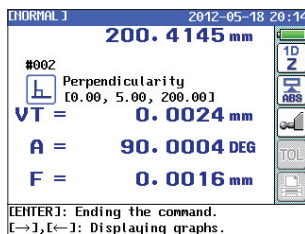
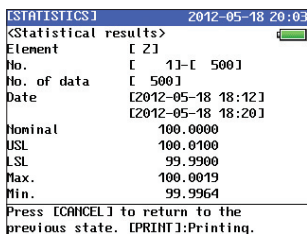


VIDEO DEMO

### Frequently Used Measurements



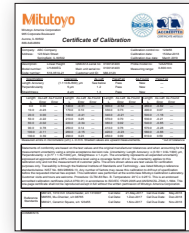
### Screen Display & Printer Output Examples



## Calibration Included



\*Complimentary accredited calibration applies to orders placed through December 31, 2021. Mitutoyo America Corporation reserves the right to change or discontinue this offer at any time. This offer is void wherever prohibited or restricted by law. No cash value. Complimentary accredited calibration will be conducted prior to unit shipping and cannot be applied toward previously placed orders. Refer to our terms and conditions for further details.



| Order No. | Base No.    | Range (Stroke)                      | Resolution                              | Remarks      | List       | Promo             |
|-----------|-------------|-------------------------------------|---|--------------|------------|-------------------|
| PROMO027  | 518-351A-21 | 0 - 977mm (600mm)<br>0 to 38" (24") | 0.0001/0.001/0.01/0.1mm                 | —            | \$8,718.00 | <b>\$7,410.30</b> |
| PROMO028  | 518-352A-21 |                                     | .000001/.00001/.0001/.001" (selectable) | w/power grip | \$9,228.00 | <b>\$7,843.80</b> |

### Linear Height Styli Kit



K650986

### Optional Accessories

| Order No. | Description                | List     | Promo           |
|-----------|----------------------------|----------|-----------------|
| K650986   | STYLI KIT M3 LINEAR HEIGHT | \$500.00 | <b>\$425.00</b> |

## Surftest SJ-210 Packages

- > Large color LCD display
- > Easy-to-use buttons for quick operations
- > Displays measurement results, evaluation curves and waveform
- > Supports global industry standards
- > Password protect function prevents unintended operations
- > 16 languages supported



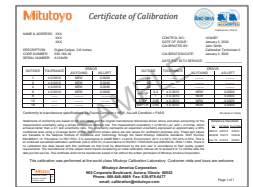
178-561-12A

**MeasurLink** ENABLED  
Data Management Software by Mitutoyo

| Order No    | Description                              | List       | Promo             |
|-------------|--|------------|-------------------|
| 64PKA226A   | Calibration Package                      | \$2,946.00 | <b>\$2,504.10</b> |
| 178-561-12A | SJ-210 inch/mm 4mN (Standard Drive Unit) |            |                   |
| 178-390     | FREE EXTRA DETECTOR                      |            |                   |
| C178-602    | 50% off Calibrated specimen              |            |                   |



178-390



| Order No.   | Description                              | List       | Promo             |
|-------------|--|------------|-------------------|
| 64PKA227A   | Data Collection Package                  | \$3,259.00 | <b>\$2,770.15</b> |
| 178-561-12A | SJ-210 inch/mm 4mN (Standard Drive Unit) |            |                   |
| 02AZD730G   | U-WAVE TRANSMITTER                       |            |                   |
| 02AZD790D   | U-WAVE connecting cable D                |            |                   |
| 02AZD810D   | FREE U-WAVE RECEIVER                     |            |                   |



02AZD730G



02AZD810D



02AZD790D

## Borematic

### Quick, spring-loaded lever action/movement

- > Titanium-coated measuring pins provide excellent durability and impact resistance and allows the instrument to measure close to the bottom of blind holes.
- > Digital display with quick-action lever operation enables quick and easy measurement.
- > Built-in ABSOLUTE System eliminates the need to set the origin point every time the unit is turned on. The system is immune to over-speed errors, thus increasing the reliability of measurement.
- > Digimatic Borematic is compatible with statistical process control systems and measurement support systems.
- > Built-in tolerance judgment function allows GO/NO-GO judgment based on user-defined upper and lower limit settings.

**MeasurLink** ENABLED  
Data Management Software by Mitutoyo

**ABSOLUTE**

**SPC**

Individual Gages: includes one digital display unit and one interchangeable measuring head (plus adapter if required)

| Order No. | Size Range      | Accuracy            | Extension Rod  | List              | Promo             |
|-----------|-----------------|---------------------|----------------|-------------------|-------------------|
| 568-461   | 0.275" - 0.350" | ±5µm<br>±0.00025 in | 100mm (952322) | \$1,450.00        | <b>\$1,232.50</b> |
| 568-462   | 0.350" - 0.425" |                     |                | \$1,450.00        | <b>\$1,232.50</b> |
| 568-463   | 0.425" - 0.500" |                     |                | \$1,450.00        | <b>\$1,232.50</b> |
| 568-464   | 0.50" - 0.65"   | ±5µm<br>±0.00025 in | 150mm (952621) | \$1,480.00        | <b>\$1,258.00</b> |
| 568-465   | 0.65" - 0.80"   |                     |                | \$1,480.00        | <b>\$1,258.00</b> |
| 568-466   | 0.8" - 1.0"     |                     |                | \$1,480.00        | <b>\$1,258.00</b> |
| 568-467   | 1.0" - 1.2"     | ±6µm<br>±0.0003 in  | 150mm (952622) | \$1,530.00        | <b>\$1,300.50</b> |
| 568-468   | 1.2" - 1.6"     |                     |                | \$1,700.00        | <b>\$1,445.00</b> |
| 568-469   | 1.6" - 2.0"     |                     |                | \$1,700.00        | <b>\$1,445.00</b> |
| 568-470   | 2.0" - 2.5"     |                     |                | \$1,660.00        | <b>\$1,411.00</b> |
| 568-471   | 2.5" - 3.0"     |                     |                | \$1,720.00        | <b>\$1,462.00</b> |
| 568-472   | 3.0" - 3.5"     | 150mm (952623)      | \$1,750.00     | <b>\$1,487.50</b> |                   |
| 568-473   | 3.5" - 4.0"     |                     | \$1,750.00     | <b>\$1,487.50</b> |                   |
| 568-474   | 4.0" - 4.5"     |                     | \$1,830.00     | <b>\$1,555.50</b> |                   |
| 568-475   | 4.5" - 5.0"     |                     | \$1,930.00     | <b>\$1,640.50</b> |                   |



### Technical Data

Resolution: 0.001mm or 0.00005 in/0.001mm  
 Display: LCD  
 Response speed: Infinite  
 Battery: SR44 (1 pc), **938882**, for initial operational checks (standard accessory)  
 Battery life: Approx. 5,000 hours in continuous use  
 Scale type: Electrostatic capacitance absolute encoder

### Functions

GO/NO-GO judgment, GO/NO-GO judgment zoom, 2-Point Preset, Zero-setting, Data hold, Error alarm, Low battery voltage alert, Data output, Function Lock, 330° rotary display, inch/mm conversion (inch/mm models)

Complete Unit Gage Sets: includes several individual gages to cover the overall size range of the set

| Order No. | Overall Range | Range of Individual Gages            | Setting Rings           | List       | Promo             |
|-----------|---------------|--------------------------------------|-------------------------|------------|-------------------|
| 568-965   | 0.275" - 0.5" | 0.275-0.35", 0.35-0.425", 0.425-0.5" | 0.35" DIA., 0.425" DIA. | \$5,010.00 | <b>\$4,258.50</b> |
| 568-966   | 0.5" - 1"     | 0.5-0.65", 0.65-0.8", 0.8-1"         | 0.65" DIA., 0.8" DIA.   | \$5,230.00 | <b>\$4,445.50</b> |
| 568-967   | 1" - 2"       | 1-1.2", 1.2-1.6", 1.6-2"             | 1.2" DIA., 1.6" DIA.    | \$5,460.00 | <b>\$4,641.00</b> |
| 568-968   | 2" - 3"       | 2-2.5", 2.5-3"                       | 2.5" DIA.               | \$3,910.00 | <b>\$3,323.50</b> |
| 568-969   | 3" - 4"       | 3-3.5", 3.5-4"                       | 3.5" DIA.               | \$4,340.00 | <b>\$3,689.00</b> |



### Interchangeable-Head Sets

| Order No. | Overall Range | Range of Individual Gages            | Setting Rings           | List       | Promo             |
|-----------|---------------|--------------------------------------|-------------------------|------------|-------------------|
| 568-928   | 0.275" - 0.5" | 0.275-0.35", 0.35-0.425", 0.425-0.5" | 0.35" DIA., 0.425" DIA. | \$2,230.00 | <b>\$1,895.50</b> |
| 568-929   | 0.5" - 1"     | 0.5-0.65", 0.65-0.8", 0.8-1"         | 0.65" DIA., 0.8" DIA.   | \$2,530.00 | <b>\$2,150.50</b> |
| 568-930   | 1" - 2"       | 1-1.2", 1.2-1.6", 1.6-2"             | 1.2" DIA., 1.6" DIA.    | \$3,080.00 | <b>\$2,618.00</b> |
| 568-936   | 2" - 4"       | 2-2.5", 2.5-3", 3-3.5", 3.5-4"       | 2.5" DIA., 3.5" DIA.    | \$4,440.00 | <b>\$3,774.00</b> |



Includes one digital display unit with several interchangeable measuring heads (and adapters as required) to cover the total size range plus one extension rod

## Digimatic Holtest

- > TiN-coated measuring contact points provide excellent durability and impact resistance and allows the instrument to measure close to the bottom of blind holes ( up to 4"/100mm models).
- > Large LCD readout.
- > Functions available: Presetting, Zero/ABS, Auto power On/Off, Data hold, Data output, Error alarm, Battery replacement alarm.
- > With ratchet stop for constant force.
- > Measure deep holes by attaching an extension rod (optional).
- > Setting rings are included in sets, but optional for individual gages.
- > Supplied in fitted plastic case up to 4"/100mm. Over 4"/100mm supplied in wooden case.
- > Resolution: .00005"/0.001mm (over 4" models: .0001"/0.001mm)

| Digimatic Holtests – Individual Units          |   |            |                   |
|--|---|------------|-------------------|
| Order No.                                      | Range                                       | List       | Promo             |
| 468-261  | Digimatic Holtest, .275" - .35"             | \$1,110.00 | <b>\$943.50</b>   |
| 468-262  | Digimatic Holtest, .35" - .425"             | \$1,110.00 | <b>\$943.50</b>   |
| 468-263  | Digimatic Holtest, .425" - .5"              | \$1,120.00 | <b>\$952.00</b>   |
| 468-264  | Digimatic Holtest, 0.5" - 0.65"             | \$1,220.00 | <b>\$1,037.00</b> |
| 468-265  | Digimatic Holtest, 0.65" - 0.8"             | \$1,220.00 | <b>\$1,037.00</b> |
| 468-266  | Digimatic Holtest, 0.8" - 1"                | \$1,250.00 | <b>\$1,062.50</b> |
| 468-267  | Digimatic Holtest, 1.0 - 1.2"               | \$1,250.00 | <b>\$1,062.50</b> |
| 468-269  | Digimatic Holtest, 1.6" - 2.0"              | \$1,290.00 | <b>\$1,096.50</b> |
| 468-270  | Digimatic Holtest, 2" - 2.5"                | \$1,400.00 | <b>\$1,190.00</b> |
| 468-271  | Digimatic Holtest, 2.5" - 3"                | \$1,400.00 | <b>\$1,190.00</b> |
| 468-272  | Digimatic Holtest, 3" - 3.5"                | \$1,420.00 | <b>\$1,207.00</b> |
| 468-273  | Digimatic Holtest, 3.5" - 4"                | \$1,440.00 | <b>\$1,224.00</b> |
| 468-274  | Digimatic Holtest, 4" - 5"                  | \$1,880.00 | <b>\$1,598.00</b> |
| 468-275  | Digimatic Holtest, 5" - 6"                  | \$1,930.00 | <b>\$1,640.50</b> |
| 468-276  | Digimatic Holtest, 6" - 7"                  | \$2,050.00 | <b>\$1,742.50</b> |
| 468-277  | Digimatic Holtest, 7" - 8"                  | \$2,140.00 | <b>\$1,819.00</b> |
| 468-278  | Digimatic Holtest, 8" - 9"                  | \$2,280.00 | <b>\$1,938.00</b> |
| 468-279  | Digimatic Holtest, 9" - 10"                 | \$2,330.00 | <b>\$1,980.50</b> |
| 468-280  | Digimatic Holtest, 10" - 11"                | \$2,410.00 | <b>\$2,048.50</b> |
| 468-281  | Digimatic Holtest, 11" - 12"                | \$2,520.00 | <b>\$2,142.00</b> |
| Digimatic Holtests – Interchangeable Head Sets |   |            |                   |
| 468-976  | Digimatic Holtest Head Set, 0.275" - 0.5"*  | \$2,030.00 | <b>\$1,725.50</b> |
| 468-977  | Digimatic Holtest, Head Set, 0.5" - 0.8"*   | \$1,650.00 | <b>\$1,402.50</b> |
| 468-978  | Digimatic Holtest, Head Set, 0.8" - 2"*     | \$4,120.00 | <b>\$3,502.00</b> |
| 468-979  | Digimatic Holtest, Head Set, 2" - 4"*       | \$4,720.00 | <b>\$4,012.00</b> |
| 468-980  | Digimatic Holtest, Head Set, 4" - 8"*       | \$5,540.00 | <b>\$4,709.00</b> |
| Digimatic Holtests – Complete Unit Sets        |   |            |                   |
| 468-986  | Digimatic Holtest, Unit-Set, 0.275" - 0.5"* | \$3,960.00 | <b>\$3,366.00</b> |
| 468-987  | Digimatic Holtest, Unit-Set, 0.5" - 1"*     | \$4,200.00 | <b>\$3,570.00</b> |
| 468-988  | Digimatic Holtest, Unit-Set, 1" - 2"*       | \$4,760.00 | <b>\$4,046.00</b> |
| 468-989  | Digimatic Holtest, Unit-Set, 2" - 3"*       | \$5,350.00 | <b>\$4,547.50</b> |
| 468-990  | Digimatic Holtest, Unit-Set, 3" - 4"*       | \$6,290.00 | <b>\$5,346.50</b> |

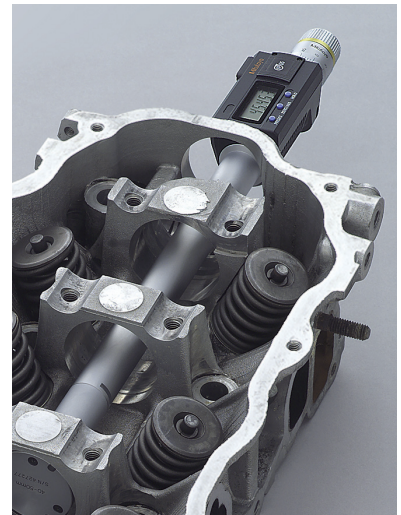


**MeasurLink** ENABLED  
Data Management Software by Mitutoyo



### Measuring Deep Holes

An extension rod (optional accessory) can be fitted to provide measurement of deep holes.



VIDEO DEMO



Complete-Unit Set



Interchangeable-Head Set

## Holtest

- > Titanium-coated measuring pins provide excellent durability and impact resistance and allows the instrument to measure close to the bottom of blind holes.
- > Three-point design ensures self-centering action for stable measurements in the range above .275" bore diameter.
- > With ratchet stop for constant force.

### Mechanical Holtests – Individual Units

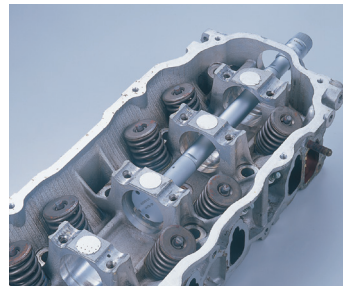
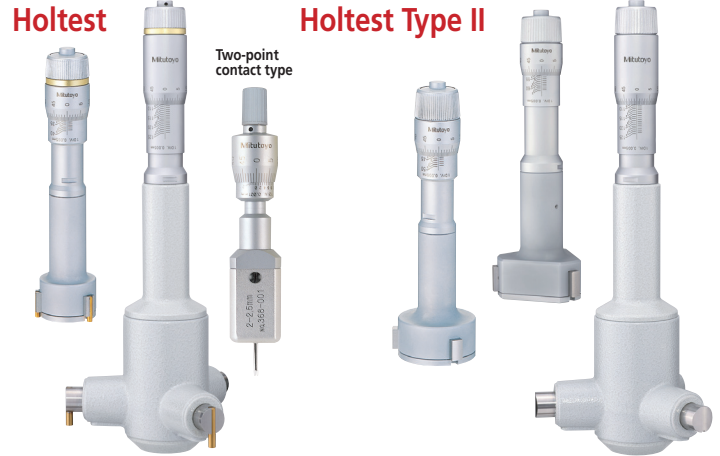
| Order No. | Description/Range       | List       | Promo             |
|-----------|-------------------------|------------|-------------------|
| 368-021   | Holtest, 0.08" - 0.1"   | \$1,500.00 | <b>\$1,200.00</b> |
| 368-022   | Holtest, 0.1" - 0.12"   | \$1,500.00 | <b>\$1,200.00</b> |
| 368-023   | Holtest, 0.12" - 0.16"  | \$1,210.00 | <b>\$968.00</b>   |
| 368-024   | Holtest, 0.16" - 0.2"   | \$1,210.00 | <b>\$968.00</b>   |
| 368-025   | Holtest, 0.2" - 0.24"   | \$1,210.00 | <b>\$968.00</b>   |
| 368-026   | Holtest, 0.24" - 0.28"  | \$1,210.00 | <b>\$968.00</b>   |
| 368-261   | Holtest, 0.275" - 0.35" | \$599.00   | <b>\$479.20</b>   |
| 368-262   | Holtest, 0.35" - 0.425" | \$599.00   | <b>\$479.20</b>   |
| 368-263   | Holtest, 0.425" - 0.5"  | \$599.00   | <b>\$479.20</b>   |
| 368-264   | Holtest, 0.5" - 0.65"   | \$621.00   | <b>\$496.80</b>   |
| 368-265   | Holtest, 0.65" - 0.8"   | \$621.00   | <b>\$496.80</b>   |
| 368-266   | Holtest, 0.8" - 1.0"    | \$645.00   | <b>\$516.00</b>   |
| 368-267   | Holtest, 1.0" - 1.2"    | \$645.00   | <b>\$516.00</b>   |
| 368-268   | Holtest, 1.2" - 1.6"    | \$806.00   | <b>\$644.80</b>   |
| 368-269   | Holtest, 1.6" - 2.0"    | \$850.00   | <b>\$680.00</b>   |
| 368-270   | Holtest, 2.0" - 2.5"    | \$855.00   | <b>\$684.00</b>   |
| 368-271   | Holtest, 2.5" - 3.0"    | \$928.00   | <b>\$742.40</b>   |
| 368-272   | Holtest, 3.0" - 3.5"    | \$953.00   | <b>\$762.40</b>   |
| 368-273   | Holtest, 3.5" - 4.0"    | \$997.00   | <b>\$797.60</b>   |
| 368-274   | Holtest, 4.0" - 5.0"    | \$1,280.00 | <b>\$1,024.00</b> |
| 368-275   | Holtest, 5.0" - 6.0"    | \$1,450.00 | <b>\$1,160.00</b> |
| 368-276   | Holtest, 6.0" - 7.0"    | \$1,490.00 | <b>\$1,192.00</b> |
| 368-277   | Holtest, 7.0" - 8.0"    | \$1,540.00 | <b>\$1,232.00</b> |
| 368-278   | Holtest, 8.0" - 9.0"    | \$1,750.00 | <b>\$1,400.00</b> |
| 368-279   | Holtest, 9.0" - 10"     | \$1,960.00 | <b>\$1,568.00</b> |
| 368-280   | Holtest, 10" - 11"      | \$1,980.00 | <b>\$1,584.00</b> |
| 368-281   | Holtest, 11" - 12"      | \$2,030.00 | <b>\$1,624.00</b> |

### Mechanical Holtests – Complete Unit Sets

|         |                                     |            |                   |
|---------|-------------------------------------|------------|-------------------|
| 368-916 | Holtest, Set, 0.275" - 0.5"*        | \$2,210.00 | <b>\$1,768.00</b> |
| 368-917 | Holtest, Set, 0.5" - 0.8"*          | \$1,490.00 | <b>\$1,192.00</b> |
| 368-918 | Holtest, Set, 0.8" - 2.0"*          | \$3,410.00 | <b>\$2,728.00</b> |
| 368-919 | Holtest, Set, 2.0" - 4.0"*          | \$4,860.00 | <b>\$3,888.00</b> |
| 368-920 | Holtest, Set, 4.0" - 8.0"*          | \$7,440.00 | <b>\$5,952.00</b> |
| 368-926 | Holtest, 2pc Set, .08" - .12"*      | \$3,190.00 | <b>\$2,552.00</b> |
| 368-927 | Holtest, 4pc Set, .12" - .28"*      | \$5,090.00 | <b>\$4,072.00</b> |
| 368-995 | HOLTEST, SET, TYPE II, R, 0.5 - .8" | \$1,360.00 | <b>\$1,088.00</b> |
| 368-996 | HOLTEST, SET, TYPE II, R, 0.8 - 2"  | \$3,120.00 | <b>\$2,496.00</b> |
| 368-997 | HOLTEST, SET, TYPE II, R, 2 - 4"    | \$4,390.00 | <b>\$3,512.00</b> |
| 368-998 | HOLTEST, SET, TYPE II, R, 4 - 8"    | \$6,840.00 | <b>\$5,472.00</b> |

## Holtest Type II

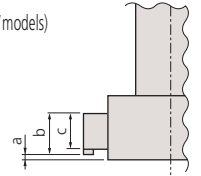
- > The anvils and cone are made from an alloy tool steel with a hardness of HRC60.5 or more.
- > Three-point design ensures self-centering action for stable measurements in the range above .275" bore diameter.
- > With ratchet stop for constant force.



### Measuring a Blind Hole

The measuring contact points held in the jaws permit measuring the diameter of a blind hole to the bottom.

(up to 100mm / 4" models)



### Measuring Deep Holes

An extension tube (optional accessory) can be fitted to enable measurement of deep holes.



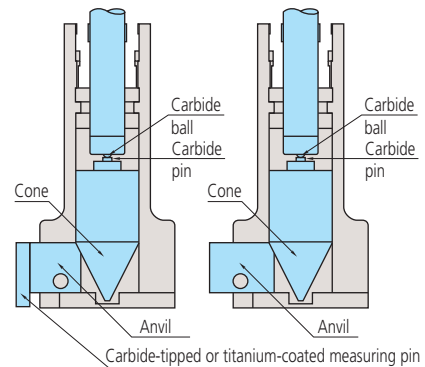
TiN coated contact points



| Range                 | a    | b   | c    |
|-----------------------|------|-----|------|
| 6 - 12mm / .275 - .5" | 2    | —   | 2.5  |
| 12 - 20mm / .5 - .8"  | 0.3  | 5.6 | 3.5  |
| 20 - 30mm / .8 - 1.2" | 0.3  | 8.3 | 5.2  |
| 30 - 50mm / 1.2 - 2"  | 0.3  | 13  | 10   |
| 50 - 100mm / 2 - 4"   | 0.3  | 17  | 14   |
| 100 - 300mm / 4 - 12" | 12.4 | 21  | 13.8 |

### Inspection Certificate Supplied as Standard

An Inspection Certificate is supplied with each instrument, which assures product quality and safety. On request, Mitutoyo can issue a Calibration Certificate, at a cost, from our accredited calibration laboratory.



We reserve the right to change prices and specifications without notice.

Willrich Precision Instrument Co. Inc.

Phone: 866-945-5742 | General Questions Email: info@willrich.com | www.willrich.com

