

VISION ENGINEERING + OUR DIFFERENCE

Vision Engineering Ltd. has been designing and manufacturing high quality ergonomic microscopes, digital instruments, inspection and non-contact measuring systems for over 60 years.

Innovation

With a philosophy of design innovation, Vision Engineering holds world patents for a number of optical / digital techniques, significantly improving viewing ergonomics and enabling customer quality and productivity improvements.

To see our focused quality, please contact your Vision Engineering branch, local authorized distributor, or visit our website: visioneng.us

Quality

Vision Engineering prides itself on quality products, electronics, mechanics and optics and is certified for the quality management system ISO 9001:2015. Quality is as important to us as our customers. Our systems have proved themselves many times over and are chosen by the world's best companies.

Global

Vision Engineering has manufacturing and design facilities in the UK and USA, plus sales and support offices throughout Europe, the Far East, Asia and the Americas. We support our customers with close technical and service support anywhere in the world.

Vision Engineering Ltd. (UK Manufacturing & Commercial)
The Freeman Building, Galileo Drive, Send, Surrey, GU23 7ER, UK
T +44 (0) 1483 248300
E generalinfo@visioneng.com

Vision Engineering Ltd. (Italia)
Via G. Paisiello 106
20092 Cinisello Balsamo MI, Italia
T +39 02 6129 3518
E info@visioneng.it

Vision Engineering (South East Asia)
P-03A-20, Impian Meridian, Jalan Subang 1, USJ 1, 47600 Subang Jaya, Selangor Darul Ehsan, Malaysia
T +604-619 2622
E info@visioneng.asia

Vision Engineering (Mexico)
T +01 800 099 5325
E info@visioneng.com

Vision Engineering Inc. (NA Manufacturing & Commercial)
570 Danbury Road, New Milford, CT 06776, USA
T +1 (860) 355 3776
E info@visioneng.com

Vision Engineering Ltd. (France)
ZAC de la Tremblaie, Av. de la Tremblaie 91220 Le Plessis Paté, France
T +33 (0) 160 76 60 00
E info@visioneng.fr

Vision Engineering (China)
Room 904B, Building B, No.970, Nanning Road, Xuhui Vanke Center Shanghai, 200235, P.R. China
T +86 (0) 21 5036 7556
E info@visioneng.com.cn

Vision Engineering (Brazil)
E info@visioneng.com.br

Vision Engineering (Latin America)
E info@visioneng.com

Vision Engineering Ltd. (Central Europe)
Anton-Pendele-Str. 3, 82275 Emmering, Deutschland
T +49 (0) 8141 40167-0
E info@visioneng.de

Nippon Vision Engineering (Japan)
272-2 Saedo-cho, Tsuduki-ku, Yokohama-shi, Kanagawa 224-0054, Japan
T +81 (45) 935 1117
E info@visioneng.jp

Vision Engineering (India)
T + 91 (0) 80-5555-33-60
E info@visioneng.co.in



FM 557119
Vision Engineering Ltd. has been certified for the quality management system ISO 9001:2015.



EVOTIS: Technical inspection system for electronics and industrial applications



FOCUSED
QUALITY

Distributor



Disclaimer: Vision Engineering Ltd. has a policy of continuous development and reserves the right to change or update, without notice, the design, materials or specification of any products, the information contained within this brochure/datasheet and to discontinue production or distribution of any of the products described.

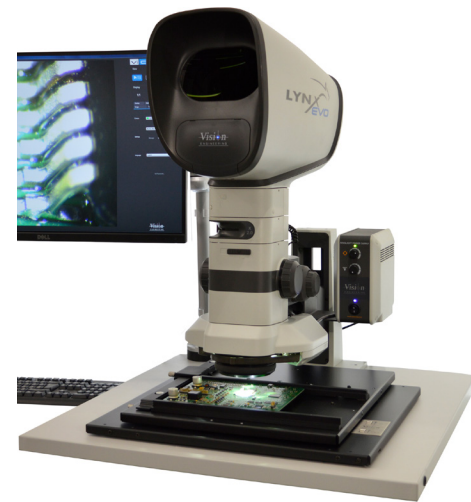
MAGNIFICATION + FLEXIBILITY

Key features

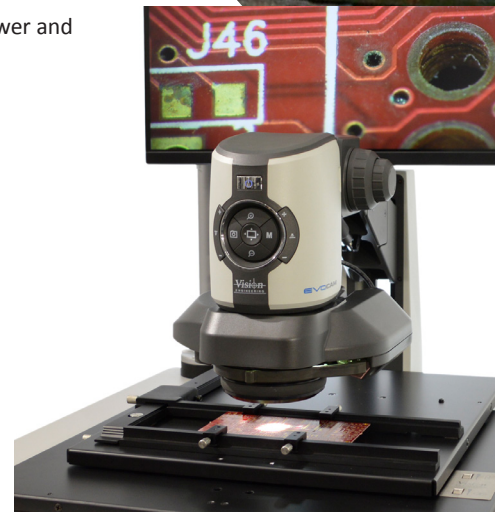
- Fast inspection of large and complex components
- Independently lockable X-Y stage for methodical inspection along features
- 25° tilt wedge for fixed position oblique viewing
- Compatible with unique 360° rotating viewer
- Specially coated ESD base board and earthing point for static safe inspection

EVOTIS is an advanced inspection workstation for large area subjects such as PCB's and palletized components. Independently lockable X-Y axis movement allows methodical inspection scanning along rows of features.

Compatible with Lynx EVO and EVO Cam, EVOTIS provides access to a large range of inspection tools, including 360° rotating viewer, wide range of objectives, high resolution camera modules and reticles, and giving a potential magnification range from 3.7x to 300x. added to the configuration, without loss of clarity or contrast through the common main objective.



EVOTIS with Lynx EVO, 360° viewer and SmartCam5



EVOTIS with EVO Cam II and 360° viewer

EVOTIS Features

- Free floating table
300mm x 250mm
460mm x 460mm
- 25° tilting wedge
- Optional 28mm and 50mm 'stand-off' kit
- Available with compact, standard and large bases
- Base board with ESD coating and earthing point

stage footprint and dimensions

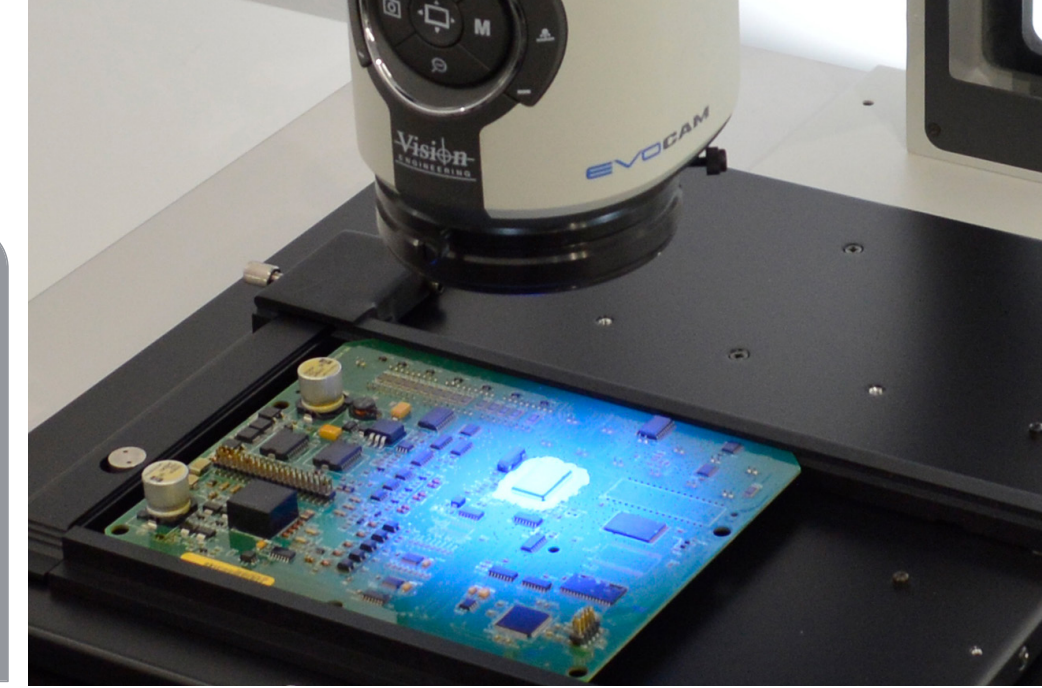
Compact* 646mm x 668mm

Standard 806mm x 743mm

Large 1108mm x 905mm

*at extreme positions table will overhang base

The stable high capacity stages provide free floating movement for all sizes of board, including double sided PCB's. Stages enable easy inspection of difficult to handle items and can be locked for precision inspection tasks.



EVOTIS with EVO Cam II and UV light accessory

ACCESSORIES + TECHNICAL INFORMATION



Lynx EVO

EVO Cam II

MAXIMUM COMPONENT HEIGHT BY OBJECTIVE

Objective	Lynx EVO	EVO Cam II
0.62x	47mm	24mm
1.0x	98mm	37mm
1.5x	106mm	74mm
with 360° viewer	84mm	39mm

MAGNIFICATION RANGE

Magnification	3.7x - 180x	5.5 - 300x
Additional objectives	0.62x, 1.0x and 1.5x	0.62x and 1.0x

ACCESSORY OPTIONS

360° viewer	✓	✓
Image capture	✓*	✓
Imaging software	✓*	✓
Compatibility with all system objectives/accessories	✓	✓
1.5x and 2.0x multipliers	✓	
Polarization filter set		✓
White/UV quadrant ring light		✓
External keypad		✓

*image capture available with optional camera SmartCam/SmartCam5. Software included with camera.



360° viewer

Common to both Lynx EVO and EVO Cam systems it allows a rotating oblique view of 34° from 360° around a feature as well as the expected direct view. Making it easy to see side details around features as well as the usual top surface. Especially useful for joints, holes, pillars and threaded forms.