

The logo for KITOV.ai, featuring a green checkmark icon to the left of the text "KITOV.ai" in a bold, green, sans-serif font.The KITOV.ai logo is printed on a green rectangular component of the robotic device, oriented vertically.

KITOV CORE-PLUS

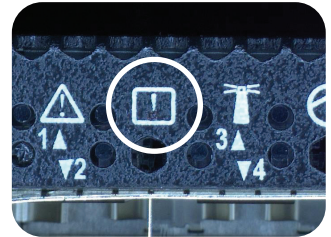
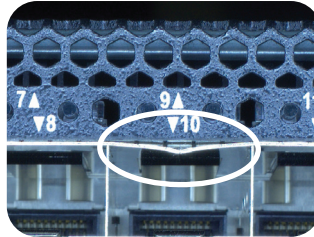
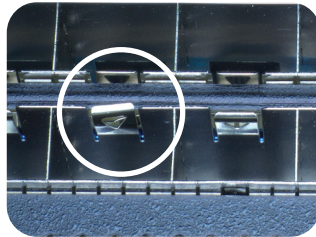
Smart Visual Inspection



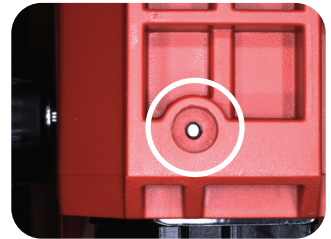
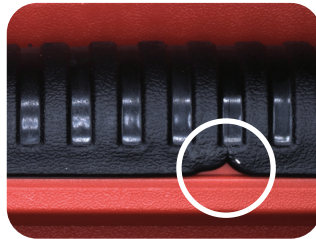


FUNCTIONAL AND COSMETIC DEFECTS

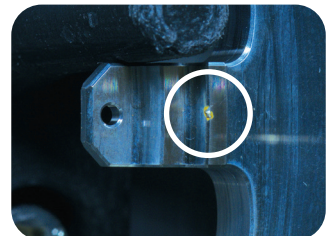
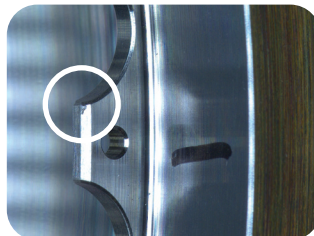
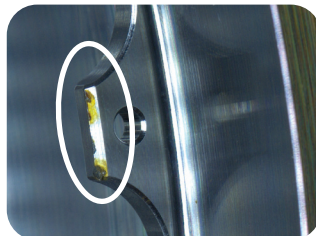
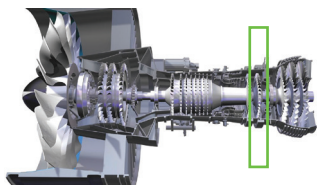
NETWORK SWITCH



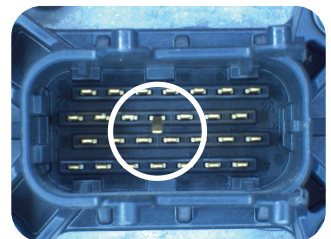
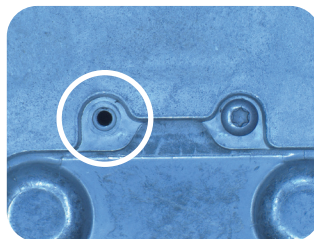
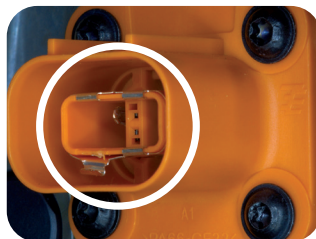
TOOL BOX



JET ENGINE DISC



EV POWER BOOSTER



			
SPECIFICATIONS	CORE	KITOV CORE-PLUS	KITOV IN-LINE
Scanned Product Size	up to 800 mm in diameter 400 mm high	up to 1130 mm in diameter 400 mm high	up to 1150 mm in diameter 400 mm high
Material Handling Solution	over-production-line con- veyor, cart, or table	automation-plug-in readiness	conveyor

Optical Head Configurations

Optical Head Options	25 mm Lens	50 mm Lens
Field of View	82 x 68 mm	41 x 34 mm
Minimal Defect Size	100 µm	50 µm

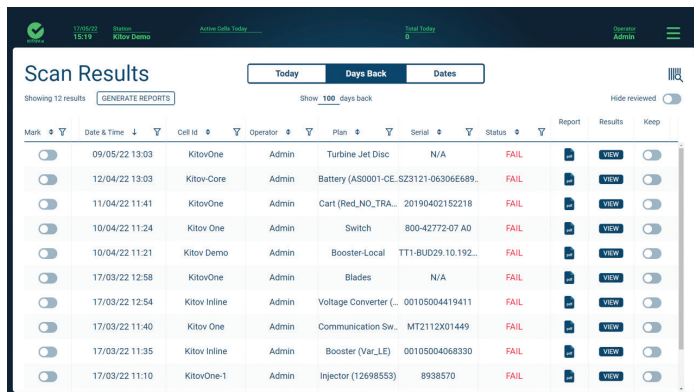
Kitov.ai Software Solutions

Kitov Smart Planner

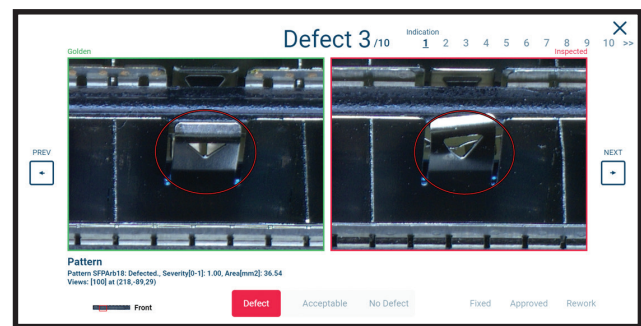
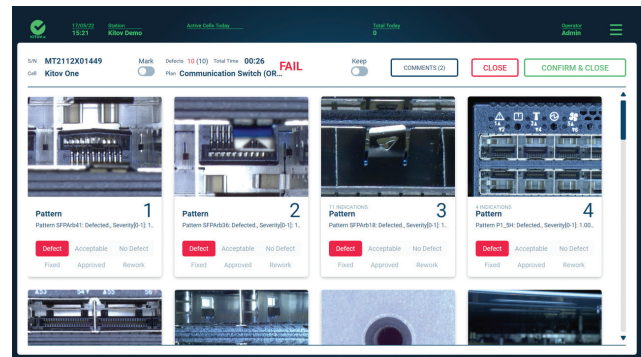
Proprietary Inspection Planning software with built-in wizards for quick and easy programming

Kitov Review Station

Simple Software Interface to easily review defects from any location



Mark	Date & Time	Cell Id	Operator	Plan	Serial	Status	Report	Results	Keep
<input type="checkbox"/>	09/05/22 13:03	KitovOne	Admin	Turbine Jet Disc	N/A	FAIL			<input type="checkbox"/>
<input type="checkbox"/>	12/04/22 13:03	KitovCore	Admin	Battery (AS0001-CE_S23121-06306E689)		FAIL			<input type="checkbox"/>
<input type="checkbox"/>	11/04/22 11:41	KitovOne	Admin	Cart (Red_NO_TRA... 20190402152218		FAIL			<input type="checkbox"/>
<input type="checkbox"/>	10/04/22 11:24	KitovOne	Admin	Switch	800-42772-07 AD	FAIL			<input type="checkbox"/>
<input type="checkbox"/>	10/04/22 11:21	Kitov Demo	Admin	Booster-Local	TT1-8U029.10.192...	FAIL			<input type="checkbox"/>
<input type="checkbox"/>	17/03/22 12:58	KitovOne	Admin	Blades	N/A	FAIL			<input type="checkbox"/>
<input type="checkbox"/>	17/03/22 12:54	Kitov Inline	Admin	Voltage Converter (... 00105004419411		FAIL			<input type="checkbox"/>
<input type="checkbox"/>	17/03/22 11:40	Kitov One	Admin	Communication Sw...	MT2112X01449	FAIL			<input type="checkbox"/>
<input type="checkbox"/>	17/03/22 11:35	Kitov Inline	Admin	Booster (Var_LE)	00105004068330	FAIL			<input type="checkbox"/>
<input type="checkbox"/>	17/03/22 11:10	KitovOne-1	Admin	Injector (12698553)	8938570	FAIL			<input type="checkbox"/>



KITOV.ai SYSTEMS

Kitov.ai's hybrid vision systems combine the best of transitional machine vision techniques, including automated lighting control, with deep learning, 2D/3D imaging, and intelligent robotic planning, all in one platform. Our newest Kitov Core-Plus offers a variety of sizes and in-line or batch configuration options, while our software makes it easy to program starting with CAD files or 3D scans, and then enhancing traditional 2D/3D machine vision solutions with the power of artificial intelligence/deep learning (AI/DL) defect classification and robot path programming. Kitov Core-Plus: Vision Guided Robot + Smart Planner + Review Station Kitov Core-Plus begins with a CAD file or, if a file is unavailable, a 3D digital twin automatically created by Kitov Core-Plus based on a 360-degree image scan. Operators use "plain English" semantic functions and simple boundary boxes to identify key inspection points. Kitov.ai software does the rest

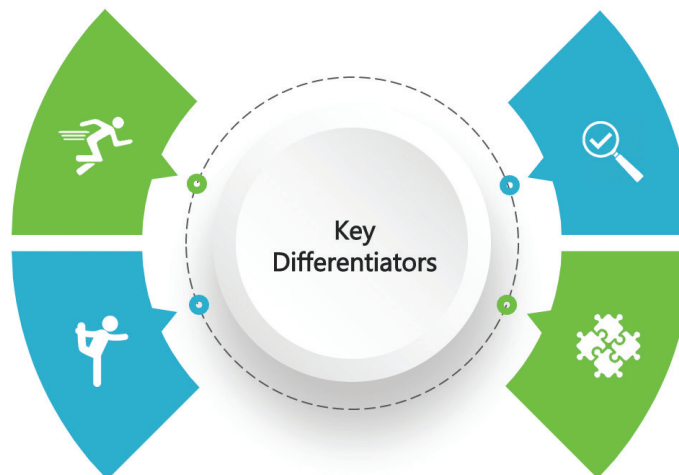
KITOV.ai KEY DIFFERENTIATORS – SMART QUALITY

Ready to Use

CAD2SCAN and semantic detection tools enable setting up inspection faster than any other solution on the market.

Flexible Solution

Supports vast industrial applications and production variation for maximum versatility.



Superior Detection

Hybrid Machine Vision + AI-based Algorithms for better defect detection and fewer false-positive results.

Connectivity

Seamless Integration to Existing Production Line Systems
Industry 4.0, ERP, MES, PLC.

 KITOV.ai



**WILLRICH PRECISION
INSTRUMENT**
THINK MEASUREMENT... THINK WILLRICH

Ph 866-945-5742 email:sales@willrich.com