

271 SERIES BLIND HOLES, STEPPED & SHALLOW BORES



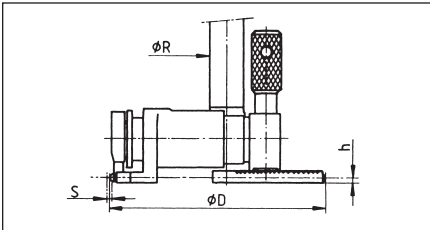
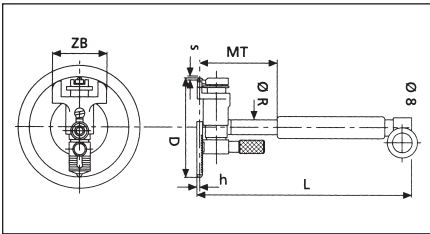
Maximum Measuring Accuracy

Linear $\leq \pm 0.000050"$ (0.0013 mm)
 Repeatability $\leq 0.000040"$ (0.001 mm)
 Gage R & R $\leq 10\%$ measuring high tolerance bores

Notable Features

Accuracy, short measuring height, sliding fixed contact to change the range, gage sets

- Measure deviations in form.
- Gage rests flat on bottom blind hole, no tipping.
- Many options, ruby contacts, special base, larger ranges; contact us with your application.
- Carbide ball contacts standard, ruby optional.
- Specials for 90° bores.
- Adjustable slide base is ribbed to lock into position.



1. Select gage based on range and "h" dimension
2. Select indicator (dial or digital)
3. Select setting master



Basic Set: Gage (with 8 mm and 3/8" stem bushings), adjustable sliding contact with carbide ball, movable carbide contact, in box. Order indicator separately.



Gage will sit on a flat surface in blind hole or stepped bore, no tipping

Models and Specifications Individual Gages

Range Inch ϕ	Range mm ϕ	Measuring Depth MT	Total Length L	Contact Travel S	Point of Contact from bottom h	Centering Plate Width ZB	Tube Diameter R	Number of Measuring Slides	Order No.
0.787-1.969	20-50	3.00"	6.40"	0.059"	0.059"	0.708"	0.394"	3	271-005
0.787-1.969	20-50	3.00"	6.40"	0.059"	0.039"	0.708"	0.394"	3	271-010
0.787-2.362	20-60	3.00"	6.40"	0.059"	0.059"	0.708"	0.394"	4	271-015
0.787-2.362	20-60	3.00"	6.40"	0.059"	0.039"	0.708"	0.394"	4	271-020
1.969-4.331	50-110	2.40"	6.40"	0.059"	0.059"	1.33"	0.472"	2	271-025
1.969-4.331	50-110	2.40"	5.60"	0.059"	0.039"	1.33"	0.472"	2	271-030
1.969-5.512	50-140	2.40"	5.60"	0.059"	0.059"	1.33"	0.472"	3	271-035
1.969-5.512	50-140	2.40"	5.60"	0.059"	0.039"	1.33"	0.472"	3	271-040
4.331-11.811	110-300	3.50"	5.60"	0.063"	0.079"	3.19"	0.708"	4	271-045
4.331-11.811	110-300	3.50"	6.40"	0.063"	0.039"	3.19"	0.708"	4	271-050
4.331-15.748	110-400	3.50"	6.40"	0.063"	0.079"	3.19"	0.708"	6	271-055
4.331-15.748	110-400	3.50"	6.40"	0.063"	0.039"	3.19"	0.708"	6	271-060

* Larger ranges available. Contact office, ruby contacts on inquiry.