



Automatic machine for dimensional inspection of screws for dental implants

100% inspection of dental implant screws and turned components with diameter up to 3 mm and length up to 12 mm

X5 FLOW



X5 Flow is the automated solution designed for the complete control of dental implant screws and turned components with diameters up to 3 mm and lengths up to 12 mm. Upon request, the machine can be configured to handle different dimensions, according to specific customer requirements.

Thanks to the **CaSca patented loading-unloading system**, X5 Flow ensures a fully automated and reliable handling process, even for small and delicate parts.

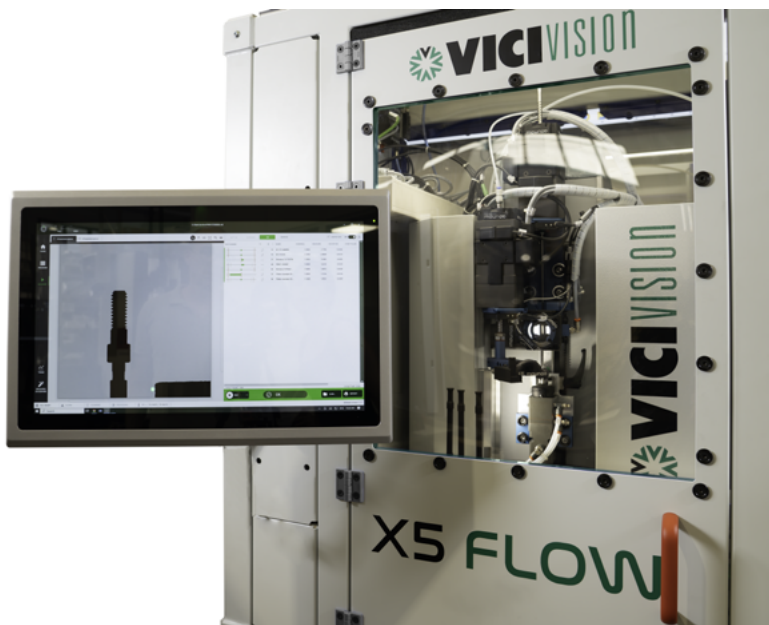
The **VICIVISION MTL-X5 optical measuring machine** is the heart of the system, which performs high-precision, non-contact dimensional and geometric controls, while preserving part integrity during the whole measuring cycle.

The **patented spindle with a measuring key (GO gauge)** allows the inspection of the socket depth, and integrates an automatic part unsticking mechanism to ensure an uninterrupted flow of measurements.

The **custom-made high performance feeder** uses pre-selection to eliminate screws with chips or dirt, a singularisation unit and pneumatic transport. These systems ensure a constant flow to the measuring station.

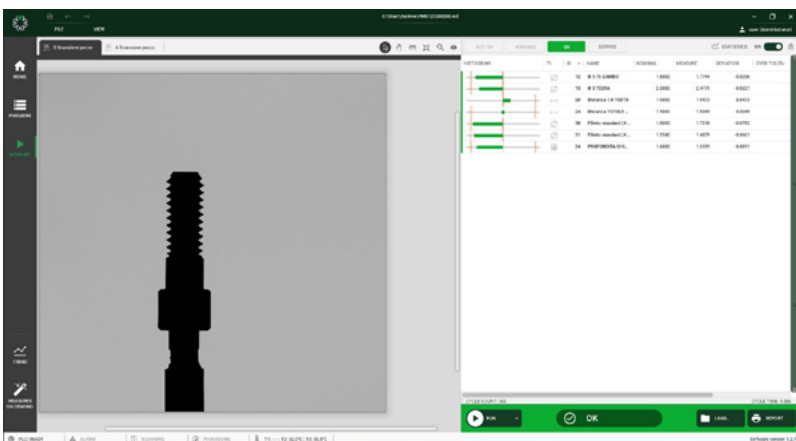


A patented, compact and efficient solution designed to guarantee the highest quality and productivity in medical micro-component inspection



X5 Flow is able to fully inspect 4 screws per minute, all within an extremely compact space with a footprint of less than 1 m².

A patented, compact and efficient solution designed to guarantee the highest quality and productivity in medical micro-component inspection.



The digital heart of X5 Flow is an intuitive and configurable management software developed to simplify all the inspection steps.

The graphical interface guides the operator through the measurement program and displays measurement results and pass/fail statistics.

With its diagnostic and reporting features, X5 Flow provides full traceability and control over every single screw being produced.